

Click the number in the first column to view a photo of the image.

Org code#	Manufacturer/Make	Model #	Serial #	Item Description	Condition - E=Excellent, G=Good, F=Fair, P=Poor, U=Unknown	Contact Person	Phone#/Email
<a href="#">6102-001</a>	BPI inc.	Vp7236	Yd5305	Office dividers	G	Jess Lavelua	814-342-5960
<a href="#">6102-002</a>	BPI inc.	Vp7236	Yd5305	Office dividers	G	Jess Lavelua	814-342-5960
<a href="#">6102-003</a>	BPI inc.	Vp7236	Yd5305	Office dividers	G	Jess Lavelua	814-342-5960
<a href="#">6102-004</a>	W.H. gundocke	465 walnut	7110-262-6685	Chair	G	Jess Lavelua	814-342-5960
<a href="#">6102-005</a>	*	*	Nln6419a	Green bag	G	Jess Lavelua	814-342-5960
<a href="#">6102-006</a>	*	*	Nln6419a	Green bag	G	Jess Lavelua	814-342-5960
<a href="#">6102-008</a>	Wood	*	*	Picture frames	G	Jess Lavelua	814-342-5960
<a href="#">6102-009</a>	Metal	*	*	Lock box	E	Jess Lavelua	814-342-5960
<a href="#">6102-013</a>	Kirby	G4	290193	Vacuum parts	E	Jess Lavelua	814-342-5960
<a href="#">6102-014</a>	Hon	*	*	File cabinet	G	Jess Lavelua	814-342-5960
<a href="#">6102-015</a>	60"x30"	*	*	Desk	G	Jess Lavelua	814-342-5960
<a href="#">6102-016</a>	40"x26 1/2"	*	*	File cabinet	G	Jess Lavelua	814-342-5960
<a href="#">6102-017</a>	48x23 3/4"	*	*	Desk	G	Jess Lavelua	814-342-5960
<a href="#">6102-019</a>	52x28 1/2"	*	PA DER #095916	File cabinet	G	Jess Lavelua	814-342-5960
<a href="#">6102-020</a>	Craftsman	113-248440	93174po170	Band saw	U	Jess Lavelua	814-342-5960
<a href="#">6102-021</a>	Craftsman	113-241691	5351po446	Table saw	U	Jess Lavelua	814-342-5960
<a href="#">6102-022</a>	Delta	Cej38ca	M6c34fb338	Table saw	U	Jess Lavelua	814-342-5960
<a href="#">6102-023</a>			9.0 x 20	2-tire inner tubes	G	Jess Lavelua	814-342-5960
<a href="#">6102-024</a>			7.5 x 16	3-tire inner tubes	G	Jess Lavelua	814-342-5960
<a href="#">6102-026</a>	Interchem	1008842-aa	10088-w1-1	Sanitizer disinfectant	G	Jess Lavelua	814-342-5960
<a href="#">6102-027</a>	*	*	*	Green office chair	G	Jess Lavelua	814-342-5960
<a href="#">6102-028</a>	*	*	PA DER#090736	Office desk	G	Jess Lavelua	814-342-5960
<a href="#">6102-030</a>	*	Green leather	*	Chair	F	Jess Lavelua	814-342-5960
<a href="#">6102-032</a>	Ray	60 volt	*	Boat motor	U	Jess Lavelua	814-342-5960
<a href="#">6102-035</a>	31x 18 1/8"	*	*	Mirror	F	Jess Lavelua	814-342-5960
6102-036 - NO IMAGE	*	*	*	Oven	U	Jess Lavelua	814-342-5960
<a href="#">6102-037</a>	15 items	37x39"	*	Screens	E	Jess Lavelua	814-342-5960
<a href="#">6102-038</a>	6 items	Stainless steel	*	Trash cans	E	Jess Lavelua	814-342-5960
6102-043 - NO IMAGE	Howe Richardson	5401-xl-56-1	72-04815	Scale	F	Jess Lavelua	814-342-5960
6102-044 - NO IMAGE	Resolute	*	*	Stoves x 3	F	Jess Lavelua	814-342-5960
<a href="#">6102-045</a>	TKO	Quantity 14 square	Dual Brown	3 Tab Shingles	F	Jess Lavelua	814-342-5960
<a href="#">6102-046</a>	Aluminum frame	34x18"	*	Windows many items	G	Jess Lavelua	814-342-5960
<a href="#">6102-047</a>			Color- White	8' Truck Cap	F	Jess Lavelua	814-342-5960



6102-001a

[Return to List](#)



6102-002b

[Return to List](#)



6102-003

[Return to List](#)



6102-004a

[Return to List](#)



6102-005a

[Return to List](#)



6102-006c

[Return to List](#)



[Return to List](#)

6102-008b





[Return to List](#)

6102-009b



6102-013c

[Return to List](#)



6102-014a

[Return to List](#)



6102-015a

[Return to List](#)



6102-016a

[Return to List](#)



[Return to List](#)

6102-017a



6102-019b

[Return to List](#)



6102-020a

[Return to List](#)





6102-021c

[Return to List](#)



[Return to List](#)

6102-022a



[Return to List](#)

6102-023a



[Return to List](#)

6102-024c



[Return to List](#)

6102-026a



6102-027a

[Return to List](#)



6102-028a

[Return to List](#)



6102-030a

[Return to List](#)





6102-032c

[Return to List](#)



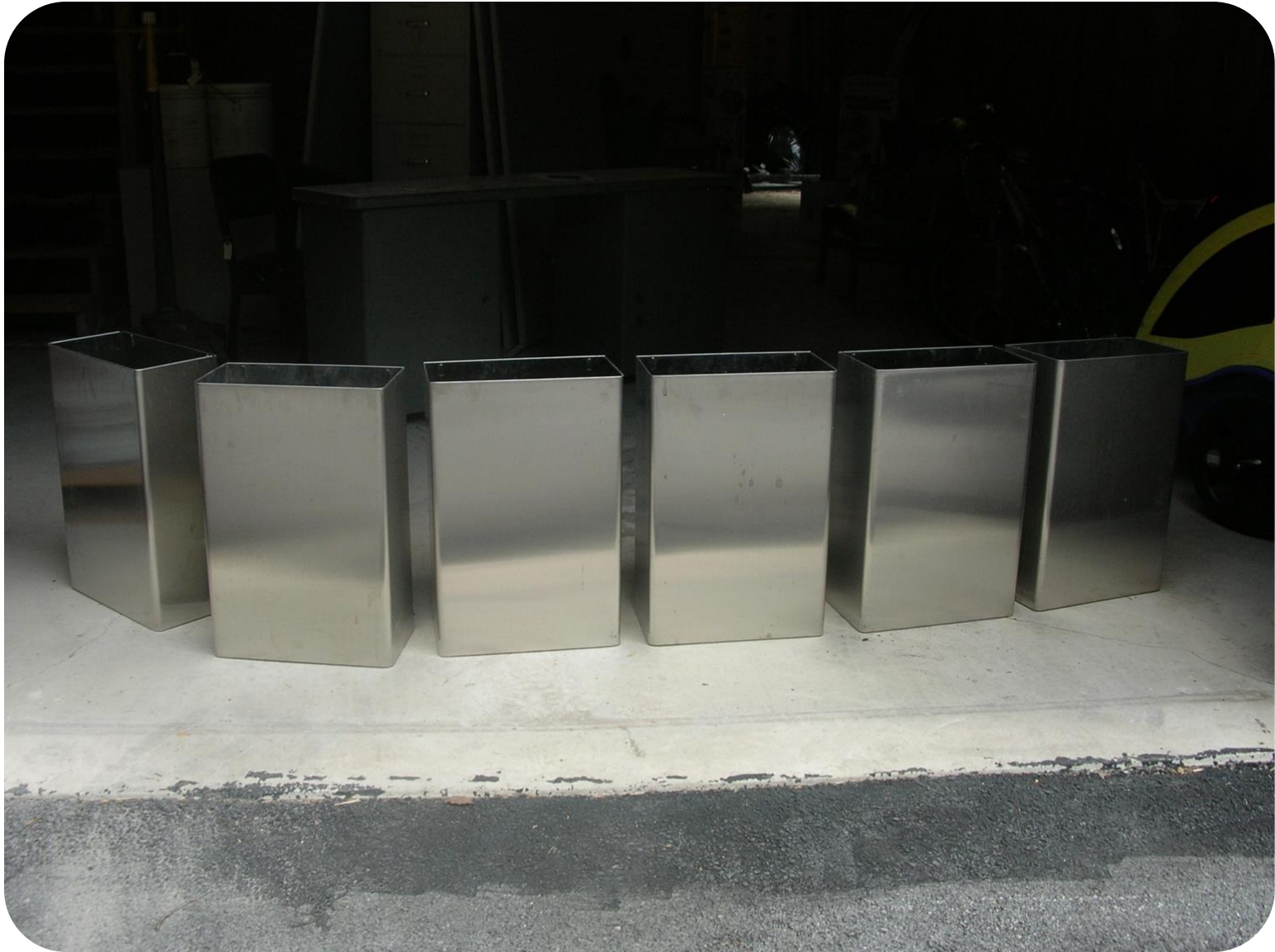
6102-035a

[Return to List](#)



6102-037a

[Return to List](#)



[Return to List](#)

6102-038b



[Return to List](#)

6102-045b



6102-046a

[Return to List](#)



[Return to List](#)

6102-047d