

Employment

The offender's success on supervision is directly related to employment and financial support. If the offender is not employed, he or she must have verifiable alternative means of support.

Supervision staff will contact employers to verify job information and disclose facts of conviction and conditions of supervision. Not all offenders of employment are suitable for all offenders. Determinations are made on a case-by-case basis.

Resources

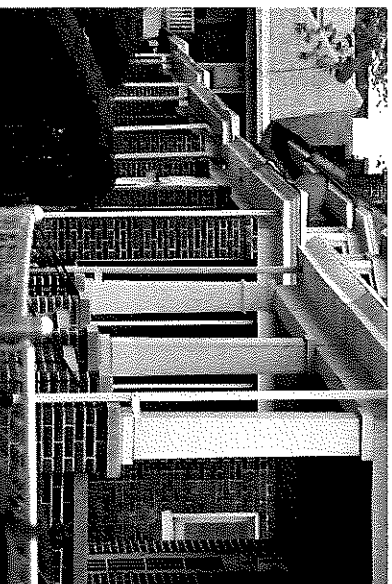
If you or other members of your household are a victim of domestic violence, confidential assistance and information is available through The Office of the Victim Advocate (OVA) at www.o.va.pa.gov. This site has a County Resource link to identify resources and help in your area. OVA may also be reached at 1.800.563.6399.

The website for the
Board of Probation and Parole

www.pbpp.pa.gov

For general inquiries, contact the Board's
inmate inquiry unit at:

717.772.4343



Conditions of Parole All Offenders Must Follow

- Supervised through a district office and may not leave that district without prior written permission.
- May not change their approved residence without written permission.
- Maintain regular contact with their agent.
- Follow written instructions.
- Notify of an arrest or receipt of a summons.
- Notify of changes regarding and not limited to employment, on-the-job training and education.
- Comply with all municipal, county, state and Federal criminal laws, as well as the provisions of the Vehicle Code and the Liquor Code.
- Abstain from the possession or sale of narcotics/drugs and from the use of controlled substances without a valid prescription.
- Shall not own or possess any firearm or weapon.
- Refrain from assaultive behavior.
- Pay fines, costs, and restitution imposed by the sentencing court.
- Comply with special conditions imposed.

Save a LIFE

Naloxone (Narcan) reverses the effects of heroin and opioid (oxycodone) overdoses. Doctors can now prescribe this drug to friends and family of an addict. Please reach out for help.

www.getnaloxonenow.org

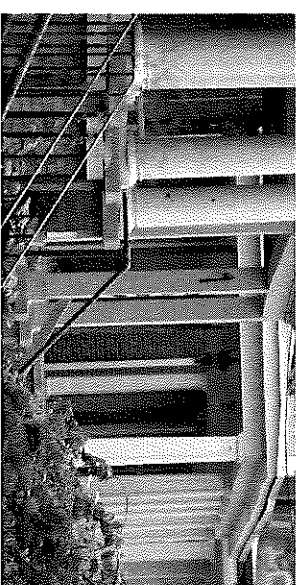
OR

www.ddap.pa.gov

In a crisis situation, call 911.

First responders may be equipped with Narcan.

Home Plan Brochure



Mission Statement

The Pennsylvania Board of Probation and Parole is committed to promoting public safety, utilizing sound decision making practices that include evidence-based approaches, employing effective methods to aid offenders in reentering society and to reduce recidivism, addressing the needs of crime victims, and improving county adult probation and parole services.

Domestic Violence Policy

The Pennsylvania Board of Probation and Parole (Board) recognizes that the supervision of parolees includes not only the protection of the public, but the sensitive and appropriate response to victims of domestic violence. Domestic violence is a crime and a problem of enormous proportion in the Commonwealth. In order to deter re-offense, the Board will focus on the protection of the domestic violence victim and the community. The Board also emphasizes the offender's acceptance of responsibility and accountability for his/her conduct.

May 2015

How is a home plan investigated?

Home plan investigations are done to protect public safety and to build the best foundation for the offender's successful return to the community. It is important the home provider understands the impact and responsibility of having an offender reside in their home.

Supervision staff must meet with the proposed home provider, in person, inside the residence. It is very important the home provider be available to meet with the agent, and review and sign the formal Home Provider Agreement Letter. Home plans are denied when the home providers do not answer or return phone calls, and do not respond to business cards left by the supervision staff. Refusal to cooperate means a likely denial of a home plan for the offender.

Supervision staff will discuss public information about the offender's conviction with the home provider. The agent will provide the location and business hours of the local parole office. Supervision staff also will consider input from police, neighbors, and community members. Additionally, supervision staff will review the availability of community resources needed to assist the offender with reentry.

Important Information:

Parole supervision staff will conduct visits to the residence after the offender is paroled to the approved home plan. Such visits will occur unannounced and at any time. During such visits parole staff have the authority to conduct searches to ensure adherence to parole conditions. The Board's weapons policy is that **no** weapons are permitted in the home.

The home provider will be asked to provide information relevant to the following:

- List of the occupants and their relationship to offender, age, sources of income, criminal records and feelings toward the offender.
- The offender's responsibilities such as paying rent, utilities or have rules to follow.
- Proximity to employment and availability of public transportation.
- Presence of weapons in the home. If so, they must be removed.
- A history of domestic violence with members of the household.
- If the home provider rents or leases the proposed plan, staff must speak with the landlord and view the lease.
- If the home plan does not include employment, there must be verifiable alternatives such as family support, Social Security income, or disability income.



Factors In Making A Decision:

- Circumstances that would place the parole supervision staff in danger.
- The physical condition of the home is unsafe or unfit or inadequate sleeping arrangements.
- Conditions existing within the proposed home that would present the likelihood of the offender committing similar offenses or technical parole violations.

- The proposed home provider is not currently cooperative with parole supervision staff.
- The presence in the home of other parolees or those on probation for serious offenses which may increase the offender's risk of re-offending.
- Conditions leading to the offense are not re-established, such as when the victim or victim's family resides in the household or in close proximity, domestic violence issues, and sex offender issues.
- The proposed home provider is unwilling to agree to conditions contained in the home agreement or has inadequate household accommodations.

Home Provider Responsibilities During Investigation and During Supervision

Home provider must cooperate with parole supervision staff by providing thorough and truthful information. Prior to the offender's release, the home provider must report any changes in the home plan, such as, withdrawal of the home offer or people moving in or out of the home.

Supervision staff expect the home provider to fully cooperate for as long as the offender is on supervision. The home provider is expected to inform parole supervision staff of changes and concerns.

If the offender moves out, spends nights at another house, loses a job, gets a new job, or is violating conditions of supervision, the home provider needs to report this to the supervision staff.

Parole: education classes are available. Please discuss with parole supervision staff.