

PLUMBING SYMBOLS AND ABBREVIATIONS

— ST —	STORM SEWER	BT-1	BATHTUB TAG
— SAN —	SANITARY SEWER (ABOVE GROUND)	C.O.	CLEAN OUT
— SAN —	SANITARY SEWER (BELOW GROUND)	DW-1	DISHWASHER TAG
— V —	VENT	E.C.	ELECTRICAL CONTRACTOR
—	COLD WATER	EW-1	ELECTRIC WATER COOLER TAG
—	HOT WATER	G.C.	GENERAL CONTRACTOR
— NPW —	NON-POTABLE WATER	INV.	INVERT
— SW —	SOLAR WATER HEATING PIPER	L-1	LAVATORY TAG
— SCS —	SOLAR COLLECTOR SUPPLY PIPING	MAX.	MAXIMUM
— SCR —	SOLAR COLLECTOR RETURN PIPING	MB-1	MOP BASIN TAG
—	ELBOW TURNED UP	MIN.	MINIMUM
—	ELBOW TURNED DOWN	MISC.	MISCELLANEOUS
—	TEE TURNED UP	N.I.C.	NOT IN CONTRACT
—	TEE TURNED DOWN	N.T.S.	NOT TO SCALE
—	GROUND JOINT UNION	P.C.	PLUMBING CONTRACTOR
—	CAP	WC-1	WATER CLOSET TAG
—	"P" TRAP	WFA-1	WASHER FILLER TAG
—	FLOOR DRAIN WITH TAG	R.C.	ROOF CONDUCTOR
—	BALL VALVE	S-1	SINK TAG
—	VALVE IN RISER	TYP	TYPICAL
—	CHECK VALVE	—	WALL HYDRANT
—	PRESSURE REDUCING VALVE	WHA-1	WATER HAMMER ARRESTOR - WITH TAG
—	HOSE FAUCET	—	PLUMBING FIXTURE WITH TAG
—	STRAINER	WC-1	
—	GAUGE		

PLUMBING GENERAL NOTES

- THE CONTRACTOR SHALL BE RESPONSIBLE FOR PROVIDING ALL NECESSARY FITTINGS AS REQUIRED BY ALL APPLICABLE CODES AND GOVERNING AUTHORITIES.
- THE CONTRACTOR SHALL VERIFY AND CORRECT, AS REQUIRED TO MEET ALL CODES AND REGULATIONS, ANY AND ALL POSSIBLE DISCREPANCIES BETWEEN TYPE AND SIZE OF CONNECTIONS SPECIFIED IN THE PLUMBING FIXTURE SCHEDULES AND FIXTURES ACTUALLY INSTALLED.
- VALVES AND FITTING SHALL BE OF THE SAME SIZE AS THE PIPING OF WHICH THEY ARE INSTALLED.
- THE DRAWINGS ARE DIAGRAMMATIC, THE CONTRACTOR SHALL VERIFY ACTUAL CONDITIONS AT THE SITE PRIOR TO ANY INSTALLATION.
- THE CONTRACTOR SHALL COORDINATE ALL WORK WITH OTHER TRADES.
- CONTRACTOR SHALL FIELD VERIFY ALL MEASUREMENTS PRIOR TO LAYING AND CONNECTING ALL SANITARY, STORM AND WASTE PIPING AND SHALL NOTIFY THE DEPARTMENT OF ANY DISCREPANCIES.
- ALL PIPING SHALL BE INSTALLED AS CLOSE TO DRAWINGS AS POSSIBLE WITH NO CHANGES IN SIZING.
- ALL PIPING SHALL BE ROUTED CONCEALED ABOVE CEILINGS, WITHIN WALLS OR IN CHASES EXCEPT FINAL CONNECTIONS TO FIXTURES, OR IN MECHANICAL ROOMS AND AS SPECIFICALLY NOTED OTHERWISE.
- INSTALL WALL HYDRANTS 24 INCHES ABOVE FINISHED GRADE/FLOOR.
- REFER TO ARCHITECTURAL DRAWINGS FOR EXACT PLUMBING FIXTURE LOCATIONS, MOUNTING HEIGHTS AND DIMENSIONS.
- PRIOR TO THE INSTALLATION OF NEW SEWER PIPING, THE CONTRACTOR SHALL VERIFY EXACT INVERT ELEVATIONS OF THE SEWERS TO WHICH PIPING IS TO BE CONNECTED.
- ALL VENTS THROUGH ROOF SHALL BE A MINIMUM OF TEN (10) FEET FROM AIR INTAKES.
- PIPING SHALL NOT PENETRATE ANY WALL FOOTINGS, COORDINATE WITH GENERAL CONTRACTOR TO DROP FOOTINGS AS REQUIRED TO CLEAR PLUMBING SERVICES WHERE ABSOLUTELY NECESSARY. PIPING PENETRATING A BEARING WALL OR FOOTING MUST BE SLEEVED AND THE LOCATION BE APPROVED BY THE DEPARTMENT.
- EXPOSED PIPING IN FINISHED SPACES SHALL BE CHROME PLATED.

PLUMBING FIXTURE SCHEDULE

MARK	FIXTURE	SANITARY SIZE	VENT SIZE	WATER		REMARKS
				COLD	HOT	
WC-1	WATER CLOSET	4"	-	1/2"	-	AMERICAN STANDARD MODEL NO. 2480.516 "FLOWSE" DUAL FLUSH RIGHT HEIGHT WATER CLOSET WITH COLOR-MATCHED PLASTIC SEAT & COVER AND LOOSE KEY ANGLE STOP.
L-1	LAVATORY	1 1/2"	1 1/2"	1/2"	1/2"	TOTO MODEL NO. L7307 VITREOUS CHINA WALL-HUNG LAVATORY WITH SYMMONS MODEL NO. S-20-2-0 SINGLE LEVER LAVATORY FAUCET, OPEN GRID STRAINER, LOOSE KEY ANGLE STOPS, AND CHROME PLATED 17 GAUGE P-TRAP WITH CLEANOUT.
L-2	LAVATORY	1 1/2"	1 1/2"	1/2"	1/2"	TOTO MODEL NO. L7567 UNDER COUNTER LAVATORY WITH TOTO MODEL NO. TEL36SC-10 SELF-GENERATING ECOPOWER SENSOR FAUCET, OPEN GRID STRAINER, LOOSE KEY ANGLE STOPS, AND CHROME PLATED 17 GAUGE P-TRAP WITH CLEANOUT.
L-3	LAVATORY	1 1/2"	1 1/2"	1/2"	1/2"	ADVANCE TABCO MODEL NO. 7-PS-25 STAINLESS STEEL ADA COMPLIANT LAVATORY WITH 6" EXTENDED DECK MOUNTED GOOSENECK FAUCET WITH WRISTBLADE HANDLES & LIQUID SOAP DISPENSER, OPEN GRID STRAINER, LOOSE KEY ANGLE STOP VALVES, AND CHROME PLATED 17 GAUGE P-TRAP WITH CLEANOUT.
S-1	SINK	1 1/2"	1 1/2"	1/2"	1/2"	JUST MODEL NO. SL-ADA-1921-A-GR SINGLE BOWL STAINLESS STEEL SINK WITH AMERICAN STANDARD MODEL NO. 4400.641 KITCHEN FAUCET, STAINLESS STEEL BASKET STRAINER, LOOSE KEY ANGLE STOPS, AND CHROME PLATED 17 GAUGE P-TRAP WITH CLEANOUT.
S-2	SINK	1 1/2"	1 1/2"	1/2"	1/2"	JUST MODEL CSLX-2225-B-GR SINGLE BOWL STAINLESS STEEL SINK WITH AMERICAN STANDARD MODEL NO. 6424 KITCHEN FAUCET, STAINLESS STEEL BASKET STRAINER, LOOSE KEY ANGLE STOPS, AND CHROME PLATED 17 GAUGE P-TRAP WITH CLEANOUT.
S-3	SINK	1 1/2"	1 1/2"	1/2"	1/2"	ADVANCE TABCO MODEL NO. 94-3-54-18R OR L THREE COMPARTMENT REGALINE SINK WITH DRAIN BOARDS, FAUCET HOLES ON 8" CENTERS, CHICAGO FAUCET MODEL NO. 540-LDL12E1WFCP 12" SWING SPOUT FAUCET, 1/2" IPS STAINLESS STEEL BASKET TYPE DRAIN LOCATED IN CENTER OF SINK BOWL, LOOSE KEY ANGLE STOP VALVES AND CHROME PLATED 17 GAUGE P-TRAPS WITH CLEANOUT PLUGS.
BT-1	TUB/SHOWER	2"	2"	1/2"	1/2"	TOTO MODEL NO. FB1715L/RP ENAMELED CAST IRON TUB WITH SYMMONS MODEL NO. C-98-600-B30-V-X-8 PRESSURE BALANCING TUB/SHOWER VALVE WITH HAND-HELD SHOWER HEAD AND SLIDE BAR.
MB-1	MOP BASIN	3"	2"	3/4"	3/4"	FIAT MODEL NO. MSB-2424 WITH AMERICAN STANDARD MODEL NO. 8344.112 SERVICE SINK FAUCET, 5'-0" RUBBER HOSE AND STAINLESS STEEL WALL GUARDS, AND MOP HANGER.
DW-1	DISHWASHER	1 1/2"	1 1/2"	-	INTER-CONNECTED WITH HW FROM ADJACENT SINK	FURNISHED AND INSTALLED BY .1 CONTRACTOR. .3 CONTRACTOR SHALL ROUGH-IN AND FINAL CONNECT AND PROVIDE A 17 GAUGE CHROME PLATED P-TRAP WITH CLEANOUT PLUG.
DW-2	DISHWASHER	1 1/2"	1 1/2"	-	1/2"	FURNISHED AND INSTALLED BY .1 CONTRACTOR. .3 CONTRACTOR SHALL ROUGH-IN AND FINAL CONNECT, AND PROVIDE LOOSE KEY ANGLE STOP VALVE & 17 GAUGE CHROME PLATED P-TRAP WITH CLEANOUT PLUG.
EW-1	ELECTRIC WATER COOLER	1 1/2"	1 1/2"	1/2"	-	ELKAY MODEL NO. EMABFLSC WITH LOOSE KEY ANGLE STOPS AND 17 GAUGE CHROME PLATED P-TRAP WITH CLEANOUT
WFA-1	WASHER FILLER ASSEMBLY	2"	2"	1/2"	1/2"	SYMMONS MODEL NO. W-802

WATER HAMMER ARRESTOR SCHEDULE

TAG No.	FIXTURE UNITS	SIZE *	PIPE SIZE
WHA-1	1-11	A	1/2"
WHA-2	12-32	B	3/4"
WHA-3	33-60	C	1"
WHA-4	61-113	D	1 1/4"
WHA-5	114-154	E	1 1/2"
WHA-6	155-330	F	2"

* PLUMBING AND DRAINAGE INSTITUTE STANDARD PDI-WH-201.

WATER HEATER SCHEDULE

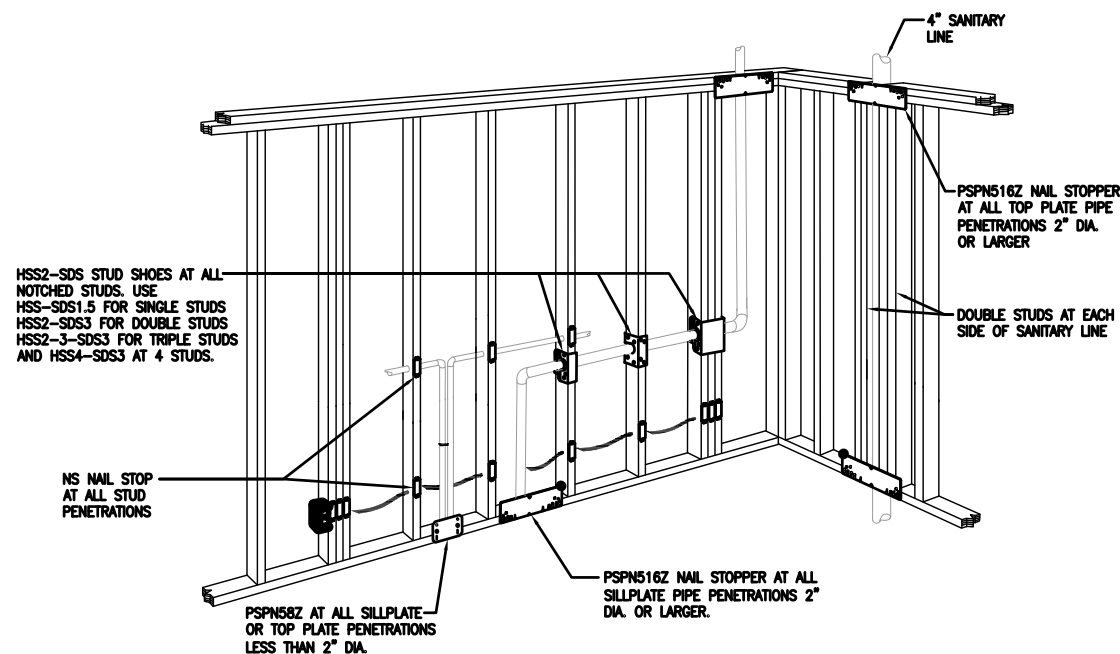
MARK	STORAGE (GAL)	DELIVERY TEMP (F)	RECOVERY		ELECTRICAL VOLT/PH/Hz	KW RATING	GAS		CONNECTION		REMARKS
			GPH	ΔT			BTU	VENT	IN	OUT	
DWH-1	119	110°	223	100°	208/3/60	54	N/A	N/A	1 1/2"	1 1/2"	* TYPICAL OF THREE (3) - LOCHINVAR MODEL NO. HSTK 54-120

DIAPHRAGM COMPRESSION TANK SCHEDULE

TAG No.	LOCATION	SERVICE	CAP. (GAL)	SIZE (INCHES) DIA.	LENGTH	INITIAL FILL PRESS.	REMARKS
DCT-1	MECHANICAL ROOM	DOMESTIC HOT WATER	15	14	27	30 psi	WESSELS MODEL NO. TTA 30 OR APPROVED EQUAL

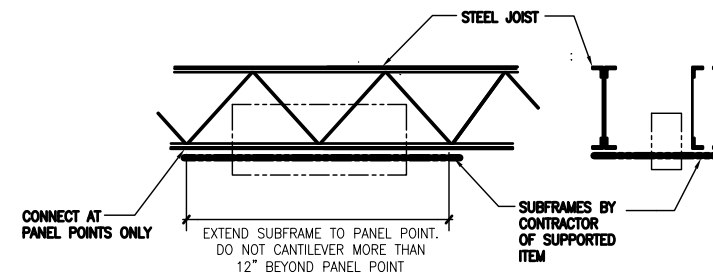
CIRCULATING PUMP SCHEDULE

TAG No.	GPM	T.D.H.	H.P.	ELECTRICAL VOLT/PH/Hz	REMARKS
RP-1	15	15'	1/8	120/1/60	MAIN BUILDING CIRCULATING PUMP. BELL & GOSSETT SERIES PL-90 OR APPROVED EQUAL



1 TYPICAL WALL PENETRATION REINFORCEMENT DETAIL
P0.1 N.T.S.

NOTES:
1) ALL STRAPS, & SHOES BY SIMPSON STRONG-TIE OR EQUAL



2 TYPICAL LOAD SUSPENSION DETAILS AT JOISTS
P0.1 N.T.S.

THIS RECORD DRAWING HAS BEEN PREPARED ON INFORMATION PROVIDED BY OTHERS. THE DESIGN PROFESSIONAL HAS NOT VERIFIED THE ACCURACY AND/OR COMPLETENESS OF THIS INFORMATION AND SHALL NOT BE RESPONSIBLE FOR ANY ERRORS OR OMISSIONS WHICH MAY BE INCORPORATED HEREIN AS A RESULT.

LI ENGINEERING PROJECT NUMBER 20070085
1000 BRIDGE ROAD, SUITE 200 WESTPHAL, PA 17360-0000

100010	RECORD DRAWING		
990908	ADDENDUM NO. 1		
1	ISSUED FOR CONSTRUCTION		
NO.	DATE	REVISION	APPR.

SUBMITTED: _____
 PROJECT DESIGNER: _____ PROJECT COORDINATOR: _____
 APPROVED: _____
 CHIEF - DIVISION OF DESIGN
 APPROVED: _____
 DIRECTOR - BUREAU OF FACILITY DESIGN AND CONSTRUCTION

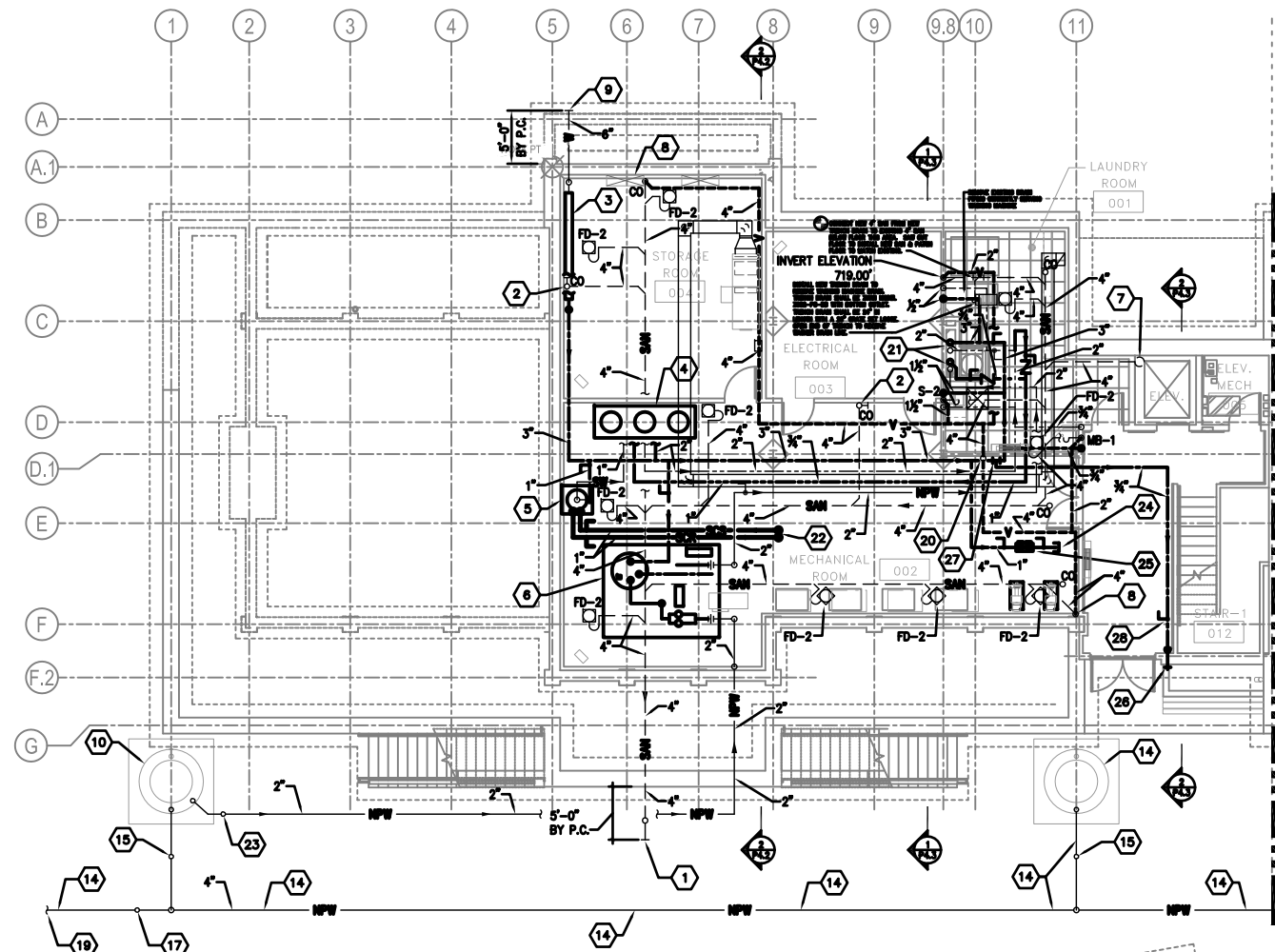
COMMONWEALTH OF PENNSYLVANIA
 DEPARTMENT OF CONSERVATION AND NATURAL RESOURCES
 OFFICE OF PARKS AND FORESTRY

PROJECT NO: FDC-133-4494
 APPLICABLE CONTRACT NO'S.
 GENERAL: PLUMBING: FDC-133-4494.3
 HVAC: ELECTRICAL:
 ROADWAY:

THE INN AT BALD EAGLE STATE PARK
 HOWARD AND LIBERTY TOWNSHIP,
 CENTRE COUNTY, PENNSYLVANIA

PLUMBING SCHEDULES, SYMBOLS,
 NOTES AND ABBREVIATIONS

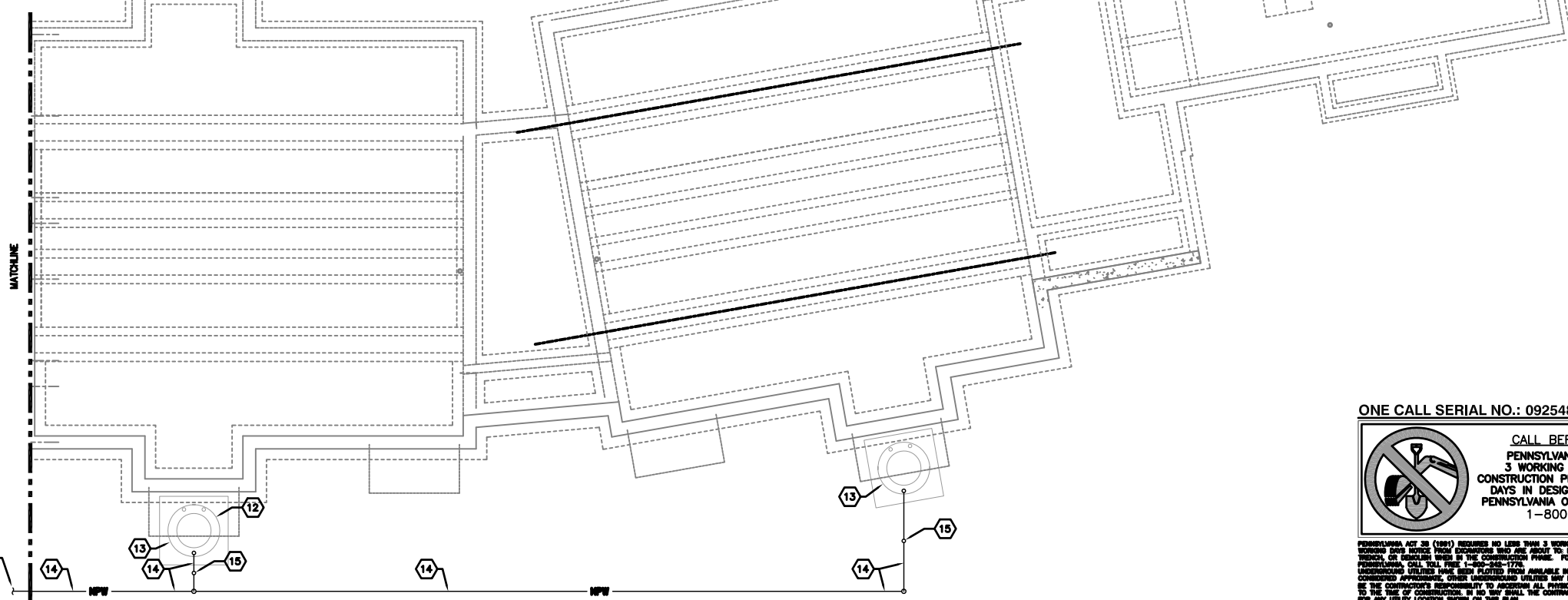
DRAWN BY: JPB	DATE: 09-03-08	DRAWING NO:
CHECKED BY: DPA	SCALE: AS NOTED	P0.1



KEYED NOTES (THIS DRAWING):

- 1 4" SANITARY AT INVERT ELEVATION 716.96' FOR CONNECTION BY .1 CONTRACTOR.
- 2 4" SANITARY FROM ABOVE AND DOWN TO BELOW FLOOR.
- 3 DOMESTIC/FIRE WATER SERVICE ENTRANCE - SEE DETAIL ON DRAWING P4.0.
- 4 DOMESTIC WATER HEATERS - SEE DETAIL ON DRAWING P4.1.
- 5 SOLAR HOT WATER TANK - SEE DETAIL ON DRAWING P4.1.
- 6 RAINWATER MANAGEMENT SYSTEM - SEE DETAIL ON DRAWING P4.1
- 7 ELEVATOR SUMP PUMP - SEE DETAIL ON DRAWING P4.0.
- 8 4" VENT UP TO ABOVE CEILING.
- 9 6" UNDERGROUND WATER MAIN BY .3 CONTRACTOR FOR CONNECTION BY .1 CONTRACTOR.
- 10 RAINWATER CISTERN #1 - SEE RAINWATER MANAGEMENT DETAIL ON DRAWING P4.1 FOR ADDITIONAL INFORMATION.
- 11 RAINWATER CISTERN #2 - SEE RAINWATER MANAGEMENT DETAIL ON DRAWING P4.1 FOR ADDITIONAL INFORMATION.
- 12 RAINWATER CISTERN #3 - SEE RAINWATER MANAGEMENT DETAIL ON DRAWING P4.1 FOR ADDITIONAL INFORMATION.
- 13 RAINWATER CISTERN #4 - SEE RAINWATER MANAGEMENT DETAIL ON DRAWING P4.1 FOR ADDITIONAL INFORMATION.
- 14 4" NON-POTABLE WATER EQUALIZING LINE - SEE RAINWATER MANAGEMENT DETAIL ON DRAWING P4.1 FOR ADDITIONAL INFORMATION.
- 15 4" UNDERGROUND GATE VALVE (NORMALLY OPEN) FOR ISOLATION/ DRAINAGE OF RAINWATER CISTERN. PROVIDE SLEEVE TO ACCESS VALVE.
- 16 FOR CONTINUATION SEE BASEMENT PLUMBING PLAN ABOVE.
- 17 4" UNDERGROUND GATE VALVE (NORMALLY CLOSED) FOR DRAINING OF RAINWATER MANAGEMENT SYSTEM. PROVIDE SLEEVE TO ACCESS VALVE AND A MINIMUM OF ONE (1) TEE-HANDLE OPERATING TOOL.
- 18 FOR CONTINUATION SEE BASEMENT PLUMBING PLAN BELOW.
- 19 EXTEND NON-POTABLE WATER LINE TO STORM SEWER AS SHOWN ON DRAWING C4.0. COORDINATE WITH .1 CONTRACTOR.
- 20 4" VENT UP - SEE LOWER LEVEL PLUMBING PLAN FOR CONTINUATION.
- 21 3" COLD WATER, 2" HOT WATER AND 2" NON-POTABLE WATER UP - 3/4" HOT WATER RETURN FROM ABOVE, SEE LOWER LEVEL PLUMBING PLAN FOR CONTINUATION. REFER TO CHASE DETAIL ON DRAWING P4.0 FOR EXACT FINAL LOCATION AND ARRANGEMENT OF PLUMBING PIPING IN CHASE.
- 22 1" SOLAR COLLECTOR SUPPLY PIPING UP - 1" SOLAR COLLECTOR RETURN PIPING FROM ABOVE, SEE LOWER LEVEL PLUMBING PLAN FOR CONTINUATION.
- 23 2" UNDERGROUND GATE VALVE (NORMALLY OPEN) FOR ISOLATION OF CISTERN PUMP. PROVIDE SLEEVE TO ACCESS VALVE.
- 24 1" VALVED & CAPPED OUTLET FOR USE BY .2 CONTRACTOR
- 25 1" REDUCED PRESSURE ZONE PRINCIPLE BACKFLOW PREVENTER - PIPE DISCHARGE TO NEAREST FLOOR DRAIN.
- 26 WALL HYDRANT - ZURN MODEL No. 21300 OR AN APPROVED EQUAL.
- 27 CONNECT NEW 3/4" COLD WATER TO EXISTING 3" COLD WATER THIS AREA.
- 28 STOP AND DRAIN VALVE.

1 BASEMENT PLUMBING PLAN A
P1.0 SCALE: 1/8" = 1'-0"



2 BASEMENT PLUMBING PLAN B
P1.0 SCALE: 1/8" = 1'-0"

THIS RECORD DRAWING HAS BEEN PREPARED ON INFORMATION PROVIDED BY OTHERS. THE DESIGN PROFESSIONAL HAS NOT VERIFIED THE ACCURACY AND/OR COMPLETENESS OF THIS INFORMATION AND SHALL NOT BE RESPONSIBLE FOR ANY ERRORS OR OMISSIONS WHICH MAY BE INCORPORATED HEREIN AS A RESULT.

LLI ENGINEERING
 6900 BRIDGE ROAD, SUITE 200 WESTPORT, PA 15389-0000
 PROJECT NUMBER: 20070085

4	10/01/10	RECORD DRAWING	
5	06/30/09	WALL HYDRANT REVISIONS/ADDITIONS	
2	06/30/08	ADDENDUM NO. 1	
1	06/30/08	ISSUED FOR CONSTRUCTION	
NO.	DATE	REVISION	APPR.

SUBMITTED: _____
 PROJECT DESIGNER: _____ PROJECT COORDINATOR: _____
 APPROVED: _____
 CHIEF - DIVISION OF DESIGN
 APPROVED: _____
 DIRECTOR - BUREAU OF FACILITY DESIGN AND CONSTRUCTION

COMMONWEALTH OF PENNSYLVANIA
 DEPARTMENT OF CONSERVATION AND NATURAL RESOURCES
 OFFICE OF PARKS AND FORESTRY

PROJECT NO: FDC-133-4494
 APPLICABLE CONTRACT NO'S.

GENERAL:	PLUMBING: FDC-133-4494.3
HVAC:	ELECTRICAL:
ROADWAY:	

THE INN AT BALD EAGLE STATE PARK
 HOWARD AND LIBERTY TOWNSHIP,
 CENTRE COUNTY, PENNSYLVANIA

BASEMENT PLAN
 PLUMBING

DRAWN BY: JPB	DATE: 09-03-08	DRAWING NO: P1.0
CHECKED BY: DPA	SCALE: AS NOTED	

ONE CALL SERIAL NO.: 0925482

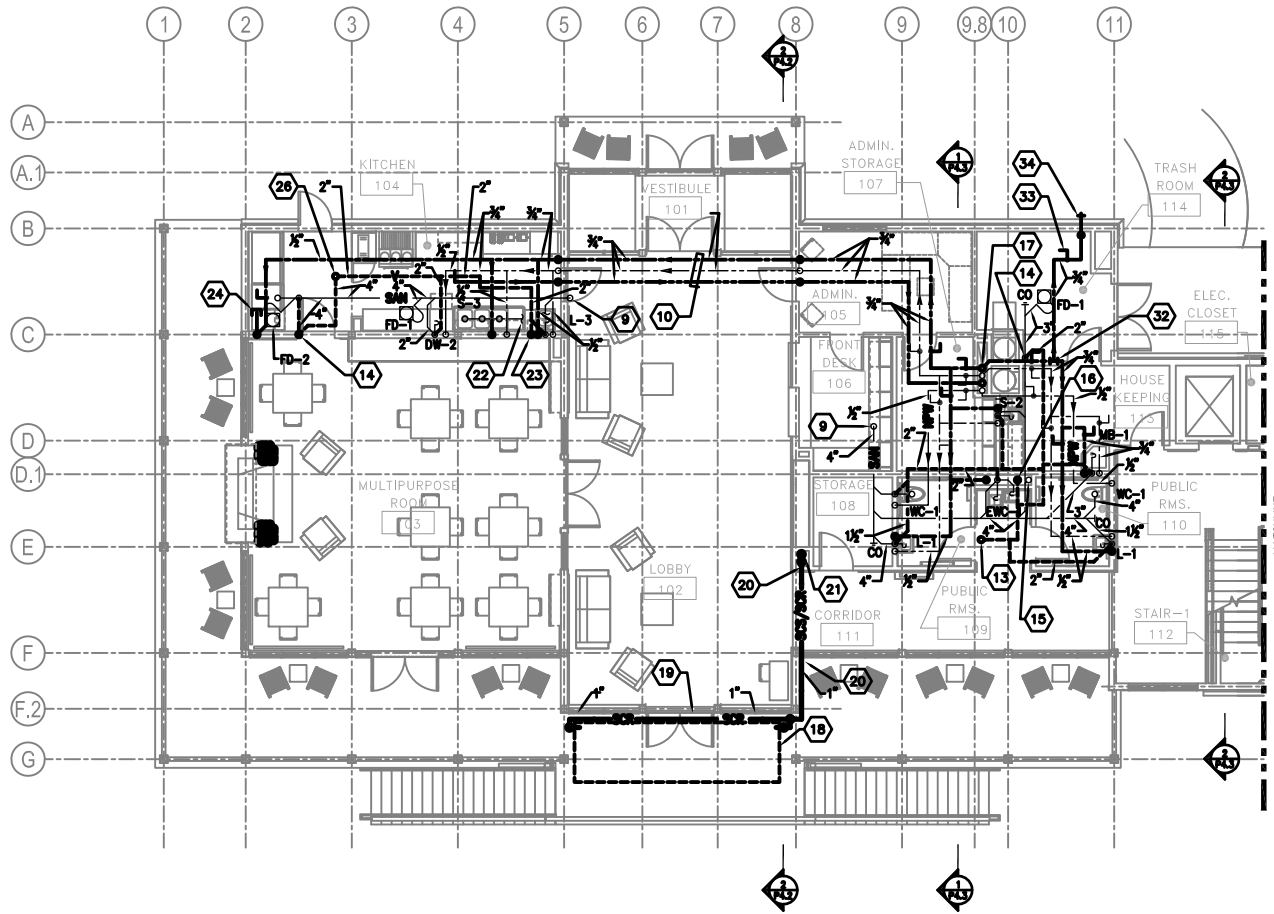
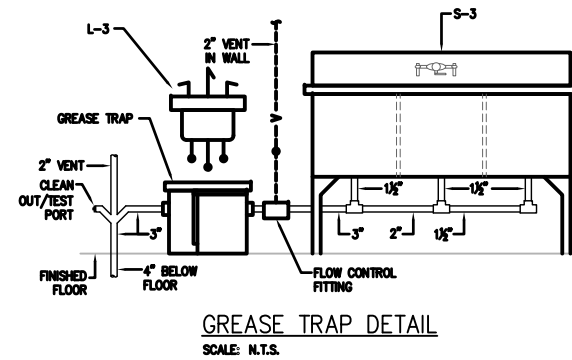
CALL BEFORE YOU DIG!
 PENNSYLVANIA LAW REQUIRES
 3 WORKING DAYS NOTICE FOR
 CONSTRUCTION PHASE AND 10 WORKING
 DAYS IN DESIGN STAGE-STOP CALL
 PENNSYLVANIA ONE CALL SYSTEM, INC.
 1-800-242-1776

PENNSYLVANIA ACT 38 (1981) REQUIRES NO LESS THAN 3 WORKING DAYS NOTICE NOR MORE THAN 10 WORKING DAYS NOTICE FROM OCCUPANTS WHO JOE ABOUT TO DRILL, DRAIN, AUGER, BORE, GROUND, TRENCH, OR EXCAVATE BASED ON THE CONSTRUCTION PERMITS. FOR LOCATION REQUESTS IN THE STATE OF PENNSYLVANIA, CALL TOLL FREE 1-800-242-1776.
 UNDERGROUND UTILITIES HAVE BEEN PLOTTED FROM AVAILABLE INFORMATION AND THE LOCATION MUST BE CORROBORATED APPROXIMATELY OTHER UNDERGROUND UTILITIES MAY EXIST DEEPER AND NOT SHOWN. IT WILL BE THE CONTRACTOR'S RESPONSIBILITY TO ASCERTAIN ALL PHYSICAL LOCATIONS OF UTILITY LINES PRIOR TO THE USE OF CONSTRUCTION. IN NO WAY SHALL THE CONTRACTOR HOLD THE SURVEYOR RESPONSIBLE FOR ANY UTILITY LOCATION SHOWN ON THIS PLAN.

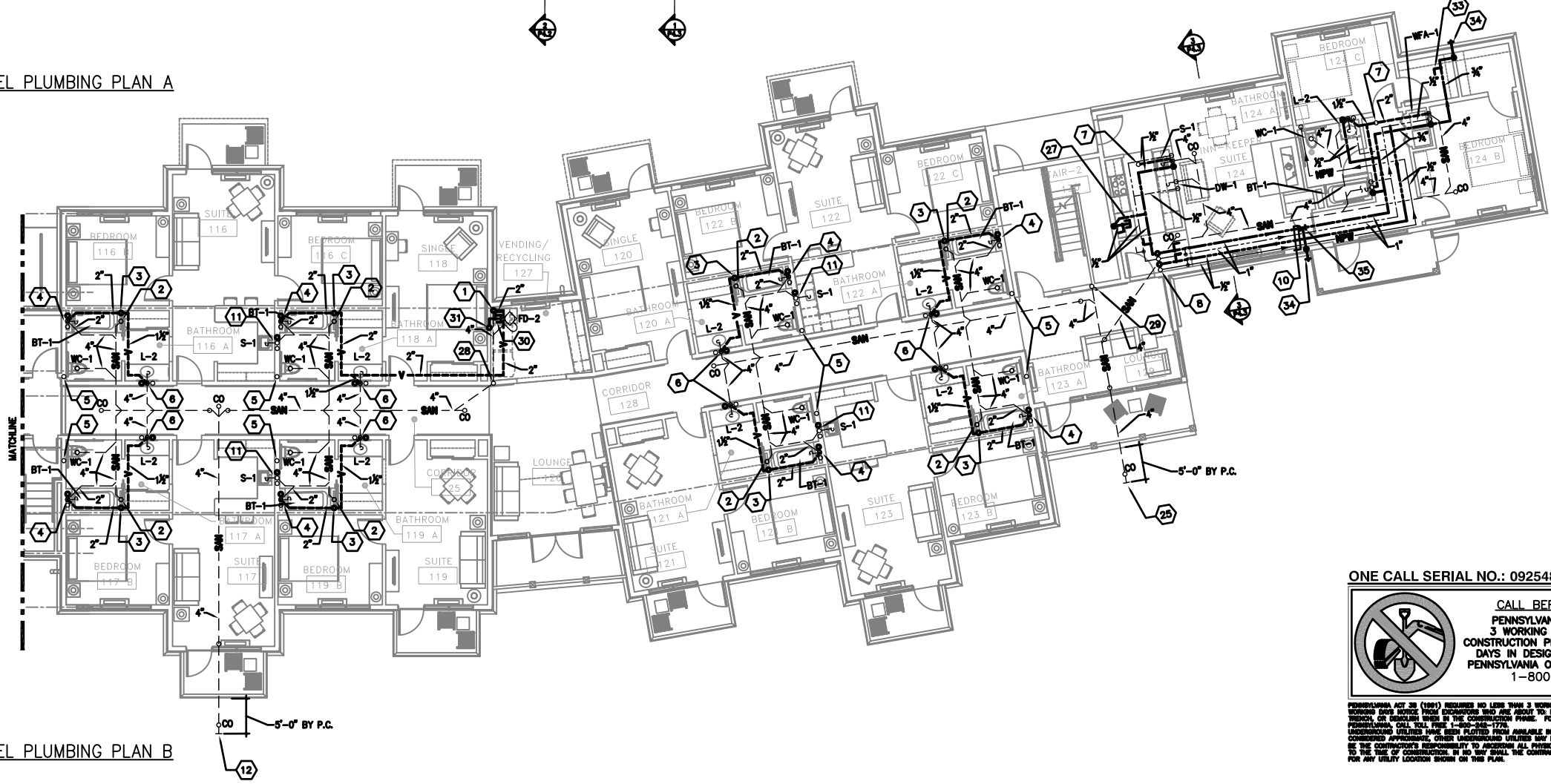
KEYED NOTES (THIS DRAWING):

- 1 4" VENT UP TO ABOVE CEILING.
- 2 4" SANITARY FROM ABOVE AND DOWN TO BELOW FLOOR.
- 3 2" VENT UP - SEE UPPER LEVEL PLUMBING PLAN FOR CONTINUATION.
- 4 1/2" HOT & COLD WATER FROM ABOVE TO SERVE TUB/SHOWER.
- 5 1/2" NON-POTABLE WATER FROM ABOVE TO SERVE WATER CLOSET.
- 6 1/2" HOT & COLD WATER FROM ABOVE TO SERVE LAVATORY.
- 7 3" VENT UP - 3" VENT THRU ROOF.
- 8 1" COLD WATER, 1" HOT WATER & 1/2" NON-POTABLE WATER FROM ABOVE - 1/2" HOT WATER RETURN UP.
- 9 4" SANITARY DOWN - SEE BASEMENT PLUMBING PLAN FOR CONTINUATION.
- 10 ROUTE PIPING IN FURRED SPACE ABOVE CEILING.
- 11 1/2" HOT & COLD WATER FROM ABOVE TO SERVE SINK.
- 12 4" SANITARY AT INVERT ELEVATION 716.50' FOR CONTINUATION BY .1 CONTRACTOR.
- 13 4" VENT UP - SEE UPPER LEVEL PLAN FOR CONTINUATION.
- 14 2" VENT UP TO ABOVE CEILING.
- 15 3" SANITARY FROM ABOVE AND DOWN TO BELOW FLOOR.
- 16 4" VENT FROM BELOW AND UP TO ABOVE CEILING.
- 17 3" COLD WATER FROM BELOW, 2" COLD WATER UP - 2" HOT WATER FROM BELOW, 2" HOT WATER UP - 2" NON-POTABLE WATER FROM BELOW, 1/2" NON-POTABLE WATER UP - 3/4" HOT WATER RETURN ABOVE AND DOWN. REFER TO CHASE DETAIL ON DRAWING P4.0 FOR EXACT FINAL LOCATION AND ARRANGEMENT OF PLUMBING PIPING IN CHASE.
- 18 VACUUM TUBE SOLAR COLLECTOR RACK MOUNTED ON TOP OF TRELLIS - REFER TO ARCHITECTURAL WALL SECTION #1/AB.3 FOR ADDITIONAL INFORMATION.
- 19 ROUTE 1" SOLAR COLLECTOR RETURN PIPING ALONG BOTTOM CHORD OF SOLAR COLLECTOR TUBE RACK - COORDINATE ROUTE WITH .1 CONTRACTOR PRIOR TO INSTALLATION.
- 20 ROUTE 1" SOLAR COLLECTOR SUPPLY AND RETURN PIPING ONE ABOVE THE OTHER TO THE POINT OF DROPS TO BELOW - COORDINATE ROUTE WITH .1 CONTRACTOR PRIOR TO INSTALLATION.

- 21 1" SOLAR COLLECTOR RETURN PIPING DOWN, 1" SOLAR COLLECTOR SUPPLY PIPING FROM ABOVE - SEE BASEMENT LEVEL PLUMBING PLAN FOR CONTINUATION.
- 22 PROVIDE GREASE TRAP TO SERVE SCULLERY SINK - SEE GREASE TRAP DETAIL ON THIS DRAWING.
- 23 2" VENT FROM GREASE TRAP FLOW CONTROL FITTING UP IN WALL TO ABOVE CEILING.
- 24 1/2" COLD WATER VALVED & CAPPED OUTLET FOR USE OF ICE MACHINE.
- 25 4" SANITARY AT INVERT ELEVATION 726.50' FOR CONNECTION BY .1 CONTRACTOR.
- 26 3" VENT UP - 3" VENT THRU ROOF. REFER TO ARCHITECTURAL ROOF PLAN FOR ADDITIONAL INFORMATION.
- 27 1/2" COLD WATER VALVED & CAPPED OUTLET FOR USE OF FUTURE ICE MAKER.
- 28 4" SANITARY FROM ABOVE. CONNECT TO 4" SANITARY BELOW FLOOR.
- 29 CLEANOUT IN WALL.
- 30 1/2" COLD WATER VALVED & CAPPED OUTLET FOR USE OF ICE MACHINE.
- 31 1/2" COLD WATER FROM ABOVE.
- 32 CONNECT NEW 3/4" COLD WATER TO EXISTING 3/4" COLD WATER ABOVE CEILING THIS AREA.
- 33 STOP AND DRAIN VALVE.
- 34 WALL HYDRANT - ZURN MODEL NO. 21300 OR AN APPROVED EQUAL.
- 35 CONNECT NEW 3/4" COLD WATER TO EXISTING 1" COLD WATER ABOVE CEILING THIS AREA. PROVIDE STOP AND DRAIN VALVE IN BRANCH LINE TO WALL HYDRANT.



1 LOWER LEVEL PLUMBING PLAN A
P1.1 SCALE: 1/8" = 1'-0"



2 LOWER LEVEL PLUMBING PLAN B
P1.1 SCALE: 1/8" = 1'-0"

THIS RECORD DRAWING HAS BEEN PREPARED ON INFORMATION PROVIDED BY OTHERS. THE DESIGN PROFESSIONAL HAS NOT VERIFIED THE ACCURACY AND/OR COMPLETENESS OF THIS INFORMATION AND SHALL NOT BE RESPONSIBLE FOR ANY ERRORS OR OMISSIONS WHICH MAY BE INCORPORATED HEREIN AS A RESULT.

LLI ENGINEERING
6000 BRIDGE ROAD, SUITE 200 WESTPHAL, PA 17355-0000
PROJECT NUMBER 20070085

4	100010	RECORD DRAWING	
5	900009	WALL HYDRANT REVISIONS/ADDITIONS	
2	900008	ADDENDUM NO.1	
1	900008	ISSUED FOR CONSTRUCTION	
NO.	DATE	REVISION	APPR.

SUBMITTED: _____
PROJECT DESIGNER: _____ PROJECT COORDINATOR: _____
APPROVED: _____
CHIEF - DIVISION OF DESIGN
APPROVED: _____
DIRECTOR - BUREAU OF FACILITY DESIGN AND CONSTRUCTION

COMMONWEALTH OF PENNSYLVANIA
DEPARTMENT OF CONSERVATION AND NATURAL RESOURCES
OFFICE OF PARKS AND FORESTRY

PROJECT NO: FDC-133-4494
APPLICABLE CONTRACT NO'S.

GENERAL: PLUMBING: FDC-133-4494.3
HVAC: ELECTRICAL:
ROADWAY:

THE INN AT BALD EAGLE STATE PARK
HOWARD AND LIBERTY TOWNSHIP,
CENTRE COUNTY, PENNSYLVANIA

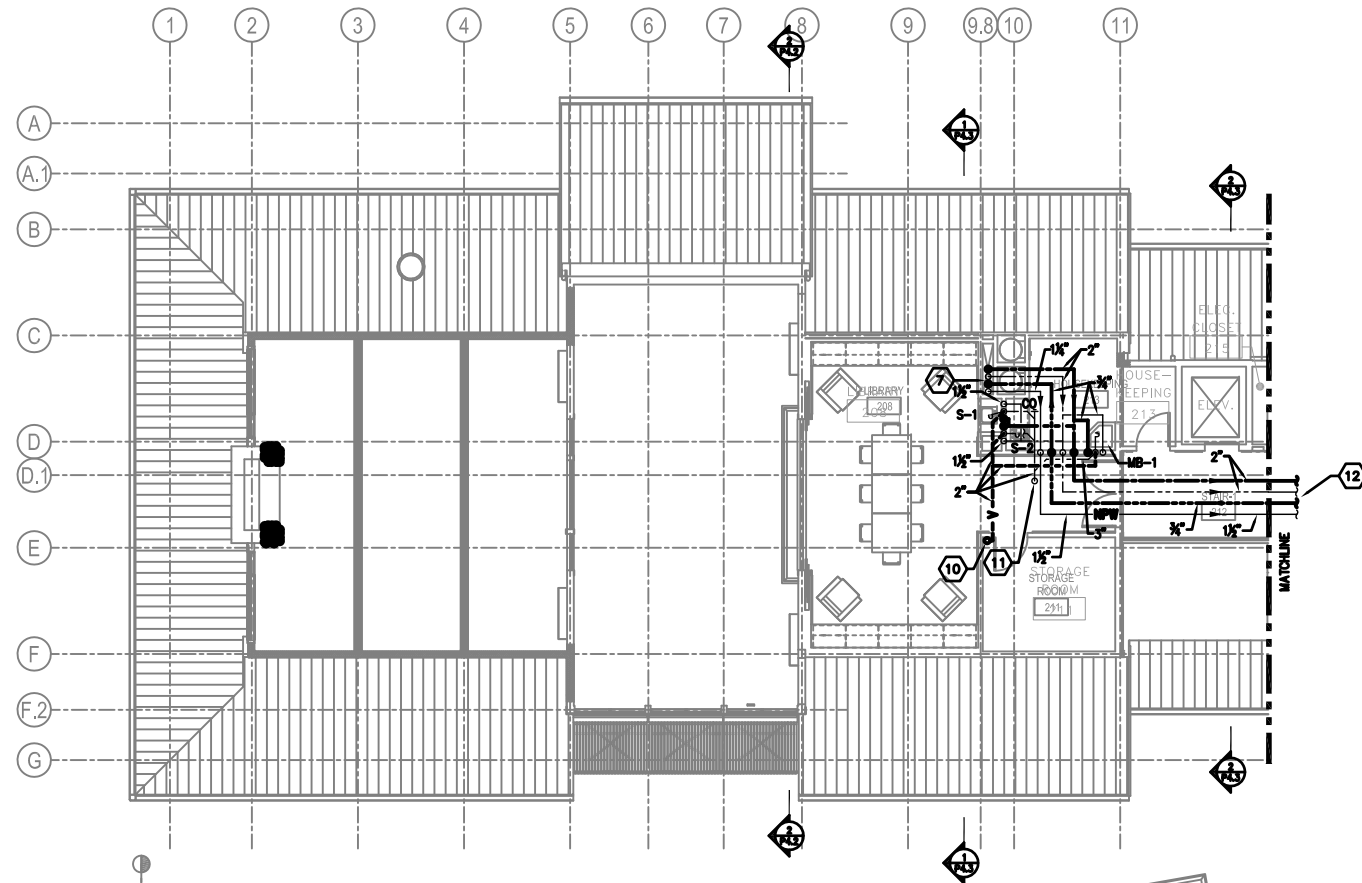
LOWER LEVEL FLOOR PLAN
PLUMBING

DRAWN BY: JPB DATE: 09-03-08 DRAWING NO.: P1.1
CHECKED BY: DPA SCALE: AS NOTED

ONE CALL SERIAL NO.: 0925482

CALL BEFORE YOU DIG!
PENNSYLVANIA LAW REQUIRES
3 WORKING DAYS NOTICE FOR
CONSTRUCTION PHASE AND 10 WORKING
DAYS IN DESIGN STAGE-STOP CALL
PENNSYLVANIA ONE CALL SYSTEM, INC.
1-800-242-1776

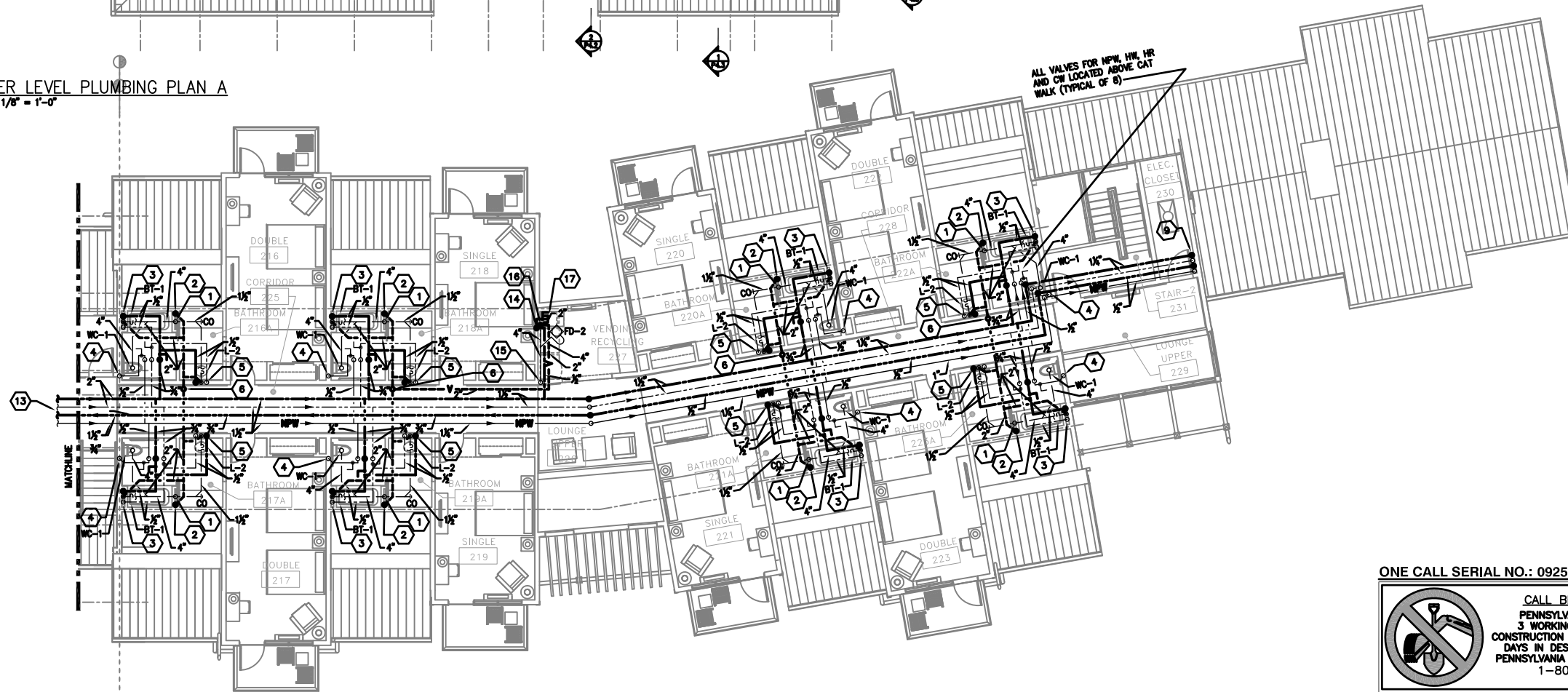
PENNSYLVANIA ACT 38 (1981) REQUIRES NO LESS THAN 3 WORKING DAYS NOTICE NOR MORE THAN 10 WORKING DAYS NOTICE FROM RECORDING AND JOB ABOUT TO BE DRILLED, BORED, AUGER, SOLE, GROUND, TRENCH, OR SHALING MADE BY THE CONSTRUCTION PARTY. FOR LOCATION REQUESTS IN THE STATE OF PENNSYLVANIA, CALL TOLL FREE 1-800-242-1776.
UNDESIGNED UTILITIES HAVE BEEN PLOTTED FROM AVAILABLE INFORMATION AND THE LOCATION MUST BE CONFIRMED APPROPRIATE OTHER CONSIDERATIONS UTILITIES MAY EXIST UNDER AND NOT SHOWN. IT WILL BE THE CONTRACTOR'S RESPONSIBILITY TO ASCERTAIN ALL PHYSICAL LOCATIONS OF UTILITY LINES PRIOR TO THE USE OF CONSTRUCTION. IN NO WAY SHALL THE CONTRACTOR HOLD THE SURVEYOR RESPONSIBLE FOR ANY UTILITY LOCATION SHOWN ON THIS PLAN.



KEYED NOTES (THIS DRAWING):

- 1 4" SANITARY DOWN. SEE LOWER LEVEL PLUMBING PLAN FOR CONTINUATION.
- 2 2" VENT FROM BELOW AND UP TO ABOVE CEILING.
- 3 1/2" HOT & COLD WATER DOWN TO SERVE TUB/SHOWER UNITS AT UPPER AND LOWER LEVELS. SEE LOWER LEVEL PLUMBING PLAN FOR CONTINUATION.
- 4 1/2" NON-POTABLE WATER (NPW) DOWN TO SERVE WATER CLOSETS AT UPPER AND LOWER LEVELS. SEE LOWER LEVEL PLUMBING PLAN FOR CONTINUATION.
- 5 1/2" HOT & COLD WATER DOWN TO SERVE LAVATORIES AT UPPER AND LOWER LEVELS. SEE LOWER LEVEL PLUMBING PLAN FOR CONTINUATION.
- 6 4" VENT FROM BELOW AND UP - 4" VENT THRU ROOF. REFER TO ARCHITECTURAL ROOF PLAN FOR ADDITIONAL INFORMATION.
- 7 2" COLD WATER, 2" HOT WATER & 1/2" NON-POTABLE WATER FROM BELOW - 3/4" HOT WATER RETURN DOWN.
- 8 RISE AS HIGH AS POSSIBLE TO ABOVE CORRIDOR STRUCTURE - REFER TO SECTION DRAWING(S) ON DRAWING P4.3.
- 9 1" COLD WATER, 1" HOT WATER, AND 1/2" NON-POTABLE WATER DOWN - 1/2" HOT WATER RETURN FROM BELOW - SEE LOWER LEVEL PLUMBING PLAN FOR CONTINUATION. COORDINATE EXACT FINAL LOCATION WITH OTHER TRADES.
- 10 4" VENT FROM BELOW AND UP - 4" VENT THRU ROOF. REFER TO ARCHITECTURAL DRAWINGS FOR ADDITIONAL INFORMATION.
- 11 3" SANITARY DOWN - SEE LOWER LEVEL PLUMBING PLAN FOR CONTINUATION.
- 12 FOR CONTINUATION SEE UPPER LEVEL PLUMBING PLAN BELOW.
- 13 FOR CONTINUATION SEE UPPER LEVEL PLUMBING PLAN ABOVE.
- 14 1/2" COLD WATER DOWN TO SERVE ICE MACHINES AT UPPER AND LOWER LEVELS. SEE LOWER PLUMBING PLAN FOR CONTINUATION.
- 15 4" SANITARY DOWN IN WALL TO BELOW LOWER LEVEL. SEE LOWER LEVEL PLUMBING PLAN FOR CONTINUATION.
- 16 4" VENT UP TO ABOVE CEILING.
- 17 1/2" COLD WATER VALVED & CAPPED OUTLET FOR USE OF ICE MACHINE.

1 UPPER LEVEL PLUMBING PLAN A
P1.2 SCALE: 1/8" = 1'-0"



2 UPPER LEVEL PLUMBING PLAN B
P1.2 SCALE: 1/8" = 1'-0"

THIS RECORD DRAWING HAS BEEN PREPARED ON INFORMATION PROVIDED BY OTHERS. THE DESIGN PROFESSIONAL HAS NOT VERIFIED THE ACCURACY AND/OR COMPLETENESS OF THIS INFORMATION AND SHALL NOT BE RESPONSIBLE FOR ANY ERRORS OR OMISSIONS WHICH MAY BE INCORPORATED HEREIN AS A RESULT.

LI ENGINEERING PROJECT NUMBER 20070085
 6000 BRIDGE ROAD, SUITE 200 WESTPORT, PA 15386-0000

2	150110	RECORD DRAWING
1	ISSUE FOR CONSTRUCTION	ISSUED FOR CONSTRUCTION
NO.	DATE	REVISION
APPR.		

SUBMITTED: _____
 PROJECT DESIGNER: _____ PROJECT COORDINATOR: _____
 APPROVED: _____
 CHIEF - DIVISION OF DESIGN
 APPROVED: _____
 DIRECTOR - BUREAU OF FACILITY DESIGN AND CONSTRUCTION

COMMONWEALTH OF PENNSYLVANIA
 DEPARTMENT OF CONSERVATION AND NATURAL RESOURCES
 OFFICE OF PARKS AND FORESTRY

PROJECT NO: FDC-133-4494
 APPLICABLE CONTRACT NO'S.

GENERAL: PLUMBING: FDC-133-4494.3
 HVAC: ELECTRICAL:
 ROADWAY:

THE INN AT BALD EAGLE STATE PARK
 HOWARD AND LIBERTY TOWNSHIP,
 CENTRE COUNTY, PENNSYLVANIA

UPPER LEVEL FLOOR PLAN
 PLUMBING

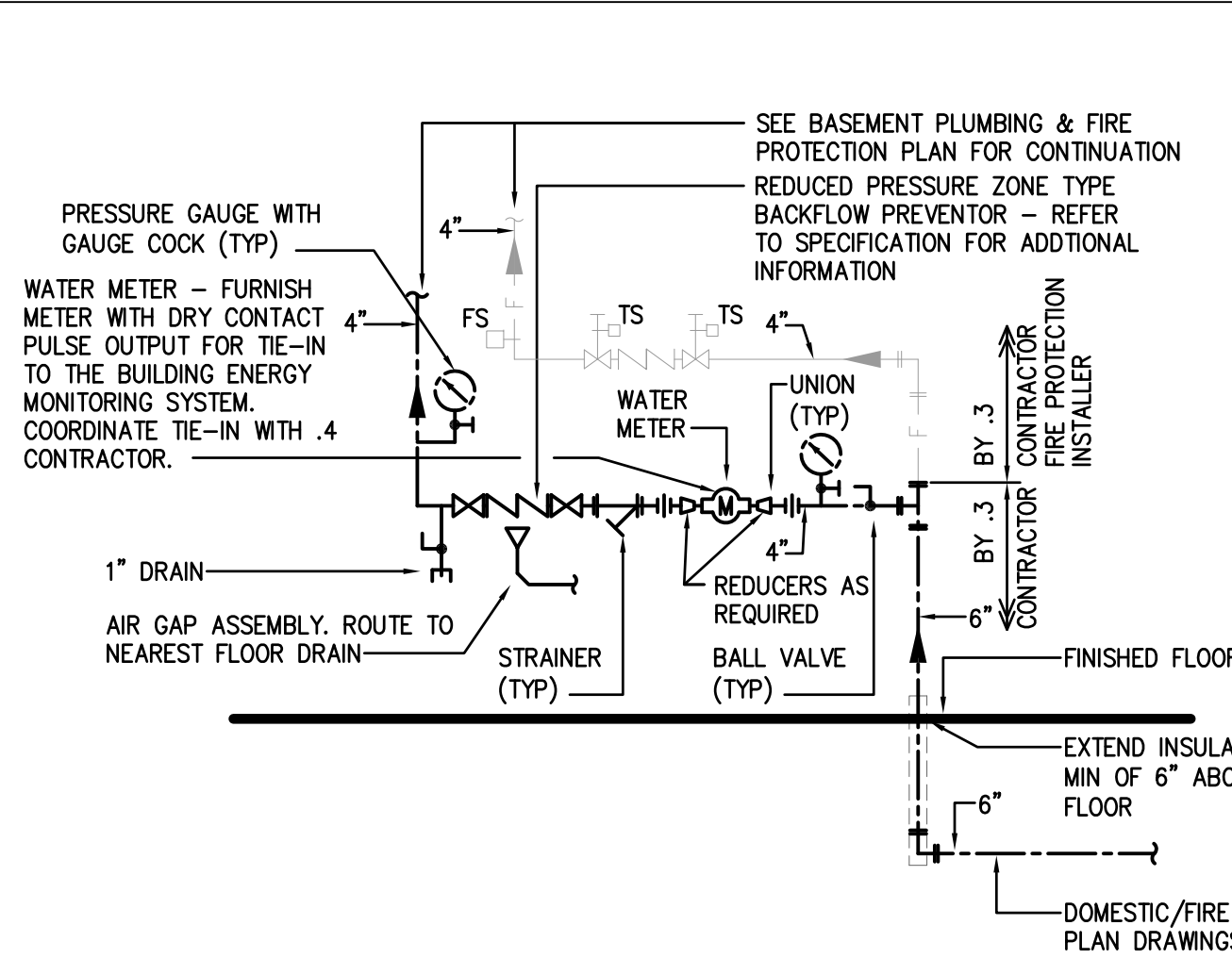
DRAWN BY: JPB DATE: 09-03-08 DRAWING NO: P1.2
 CHECKED BY: DPA SCALE: AS NOTED

ONE CALL SERIAL NO.: 0925482



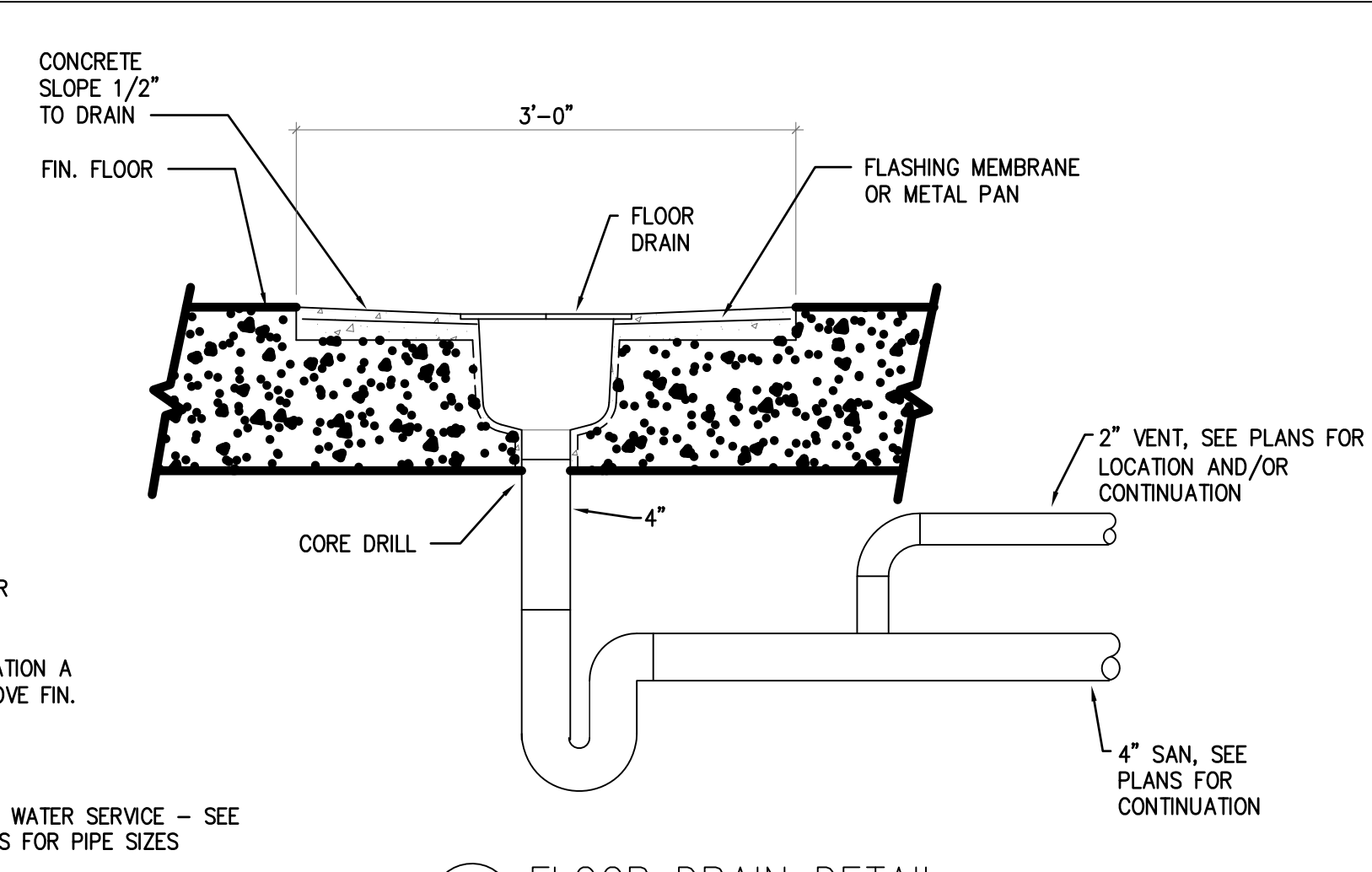
CALL BEFORE YOU DIG!
 PENNSYLVANIA LAW REQUIRES
 3 WORKING DAYS NOTICE FOR
 CONSTRUCTION PHASE AND 10 WORKING
 DAYS IN DESIGN STAGE-STOP CALL
 PENNSYLVANIA ONE CALL SYSTEM, INC.
 1-800-242-1776

PENNSYLVANIA ACT 38 (1981) REQUIRES NO LESS THAN 3 WORKING DAYS NOTICE NOR MORE THAN 10 WORKING DAYS NOTICE FROM CONSTRUCTORS WHO ARE ABOUT TO DIG DRILLS, BORED AUGERS, BORING, TRENCH, OR SIMILAR WORK BY THE CONSTRUCTION PARTY. FOR LOCATION REQUESTS IN THE STATE OF PENNSYLVANIA, CALL TOLL FREE 1-800-242-1776.
 UNDERGROUND UTILITIES HAVE BEEN PLOTTED FROM AVAILABLE INFORMATION AND THE LOCATION MARKS ARE CONSIDERED APPROXIMATE. OTHER UNDETERMINED UTILITIES MAY EXIST UNDER AND NOT SHOWN. IT WILL BE THE CONTRACTOR'S RESPONSIBILITY TO ASCERTAIN ALL PHYSICAL LOCATIONS OF UTILITY LINES PRIOR TO THE USE OF CONSTRUCTION. IN NO WAY SHALL THE CONTRACTOR HOLD THE SURVEYOR RESPONSIBLE FOR ANY UTILITY LOCATION SHOWN ON THIS PLAN.

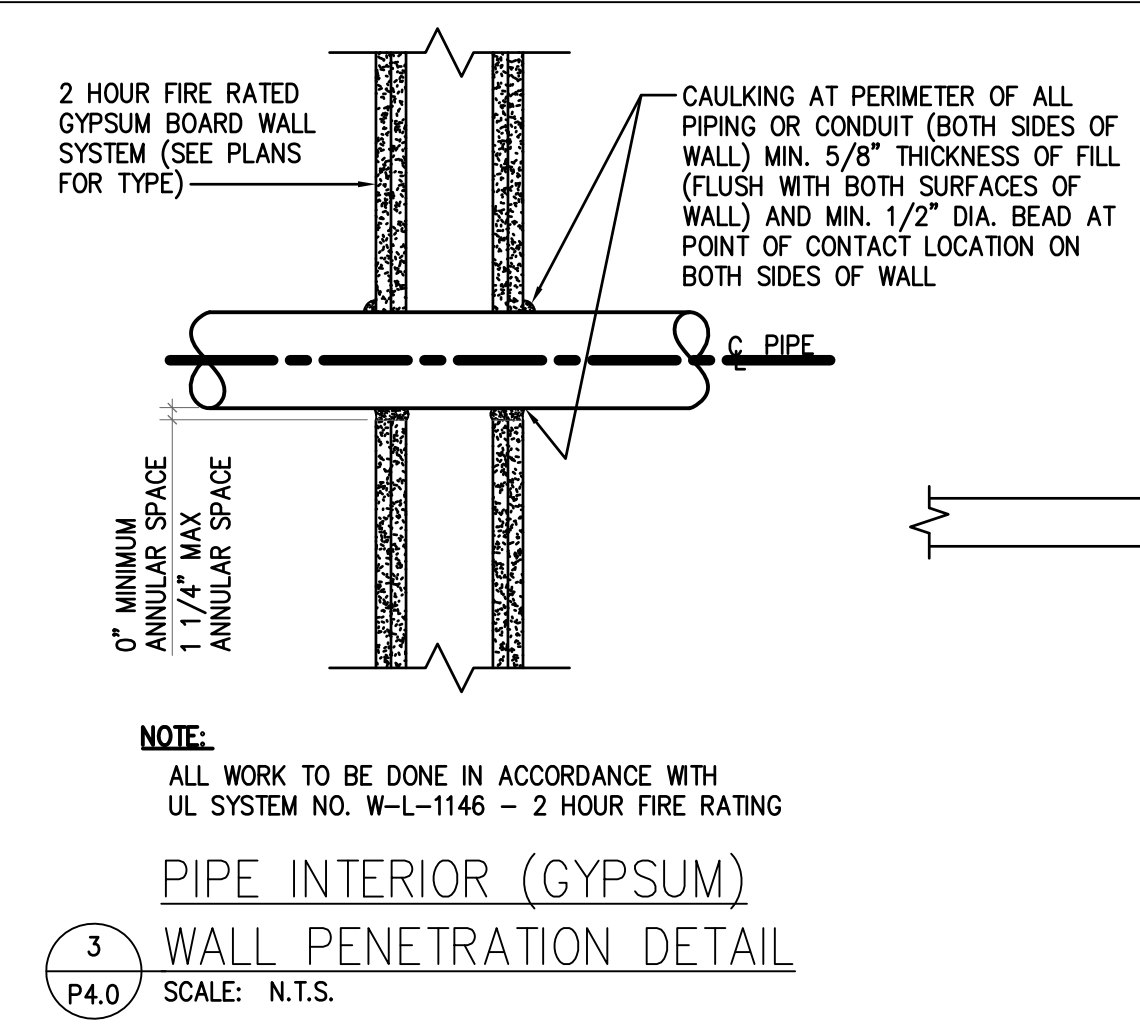


1 WATER/FIRE SERVICE ENTRANCE DETAIL
SCALE: N.T.S.

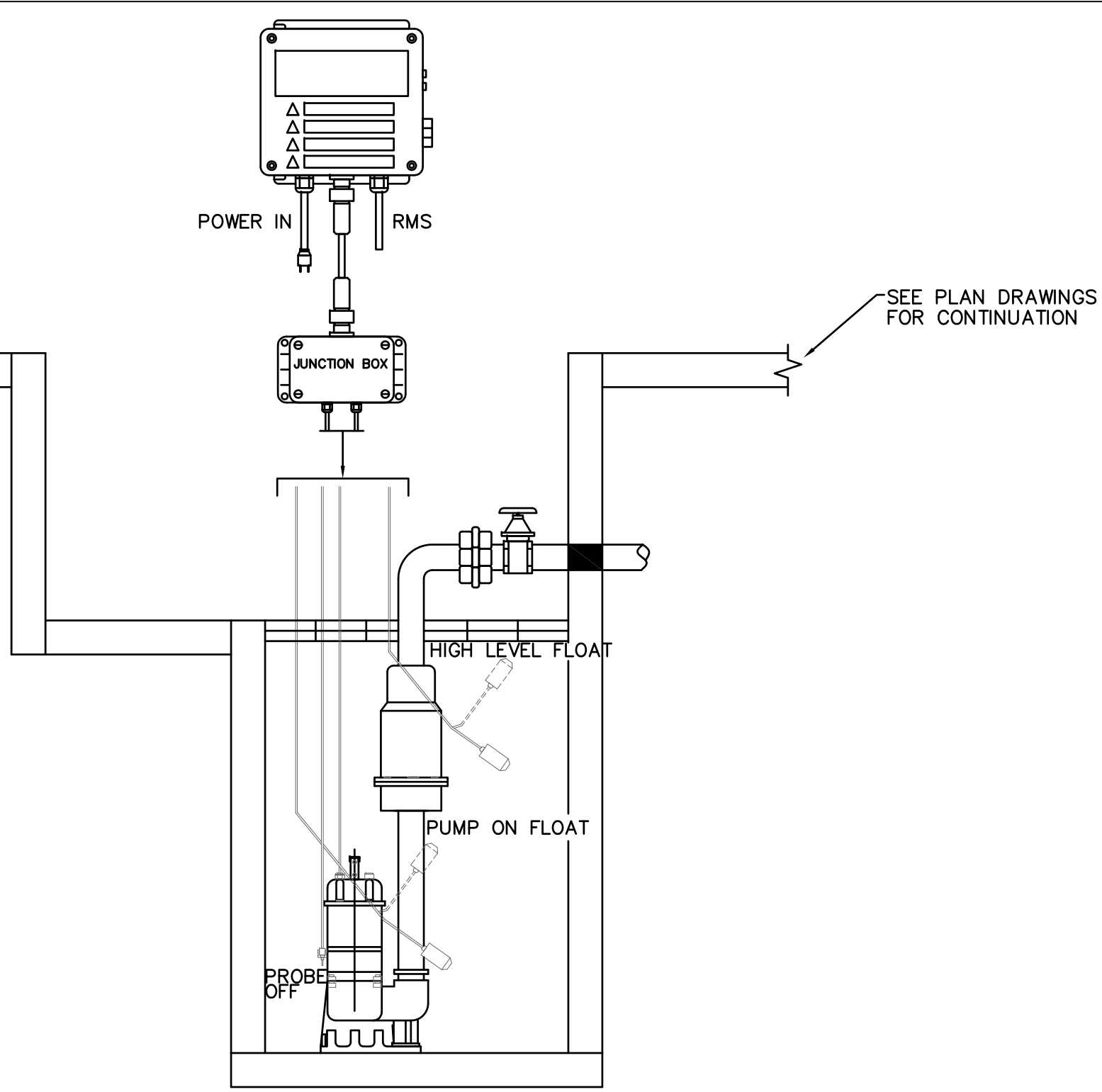
NOTE: ENTIRE INSTALLATION SHALL BE IN STRICT ACCORDANCE WITH THE LOCAL WATER AUTHORITIES RULES & REGULATIONS.



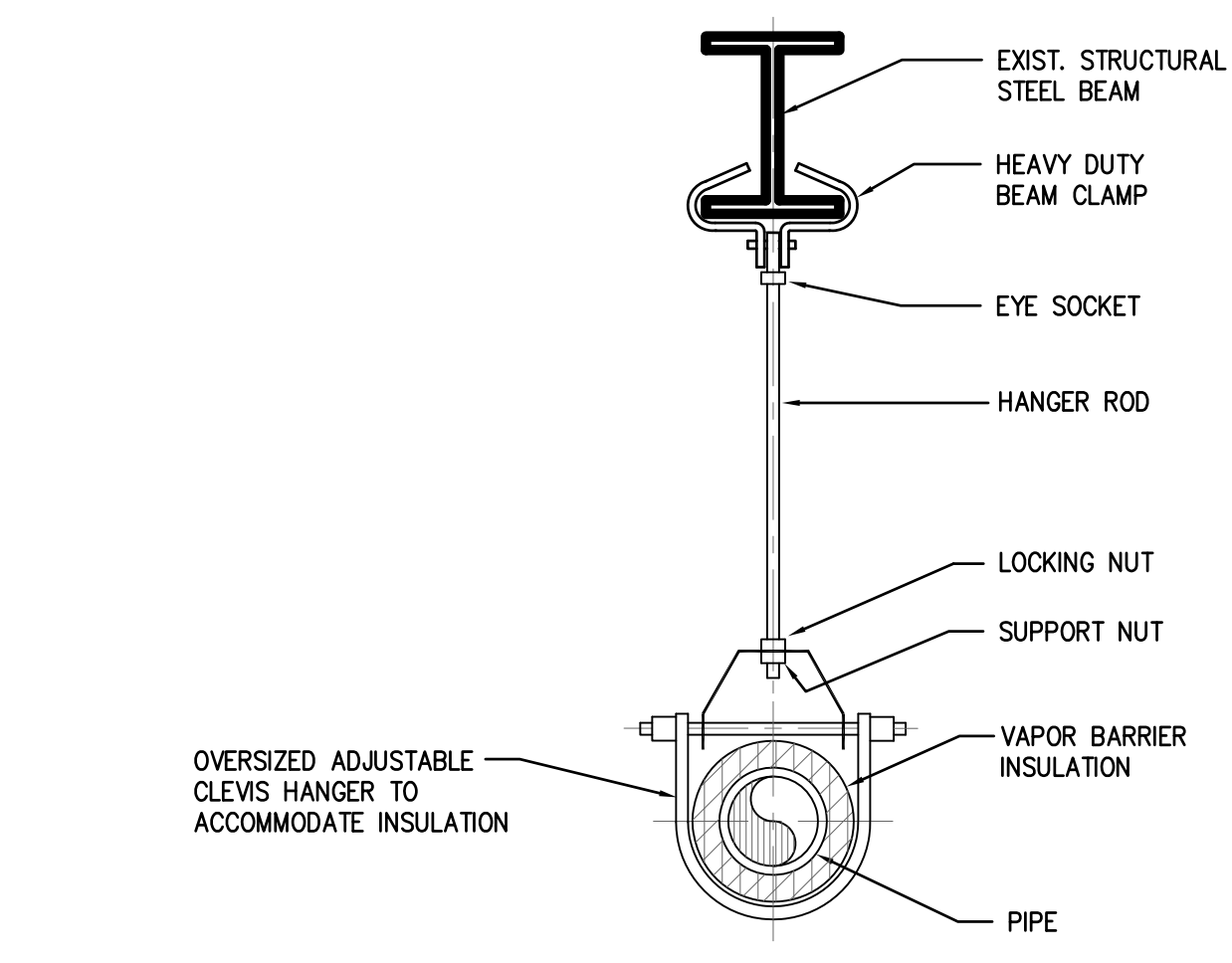
2 FLOOR DRAIN DETAIL
SCALE: N.T.S.



3 PIPE INTERIOR (GYPSUM) WALL PENETRATION DETAIL
SCALE: N.T.S.

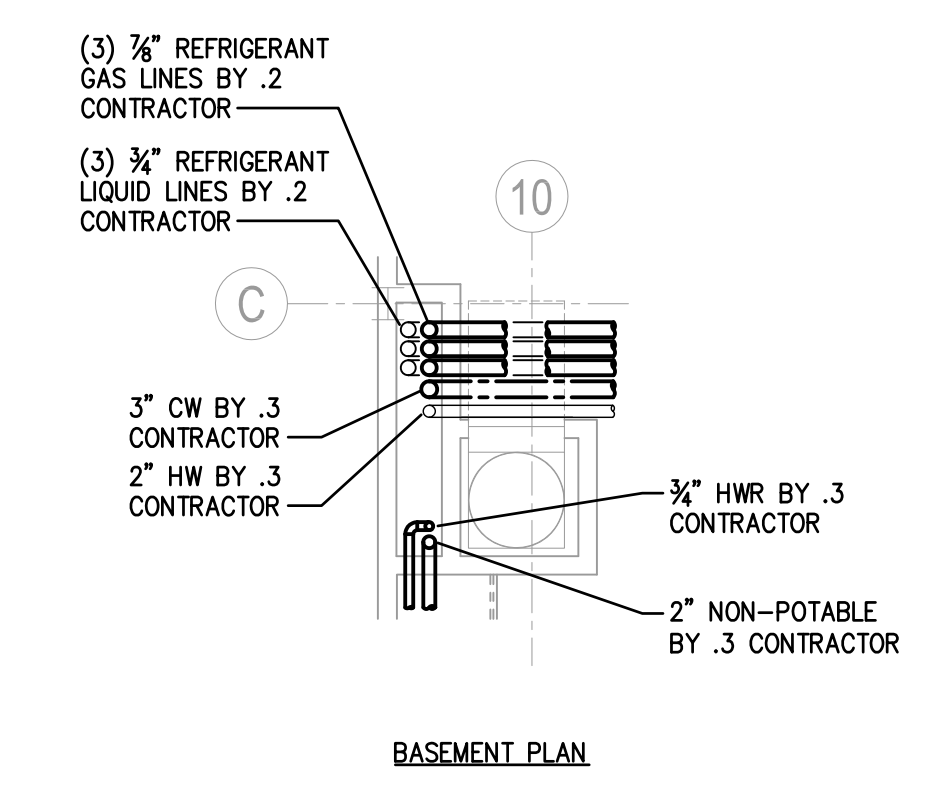


4 ELEVATOR SUMP PUMP DETAIL
SCALE: N.T.S.

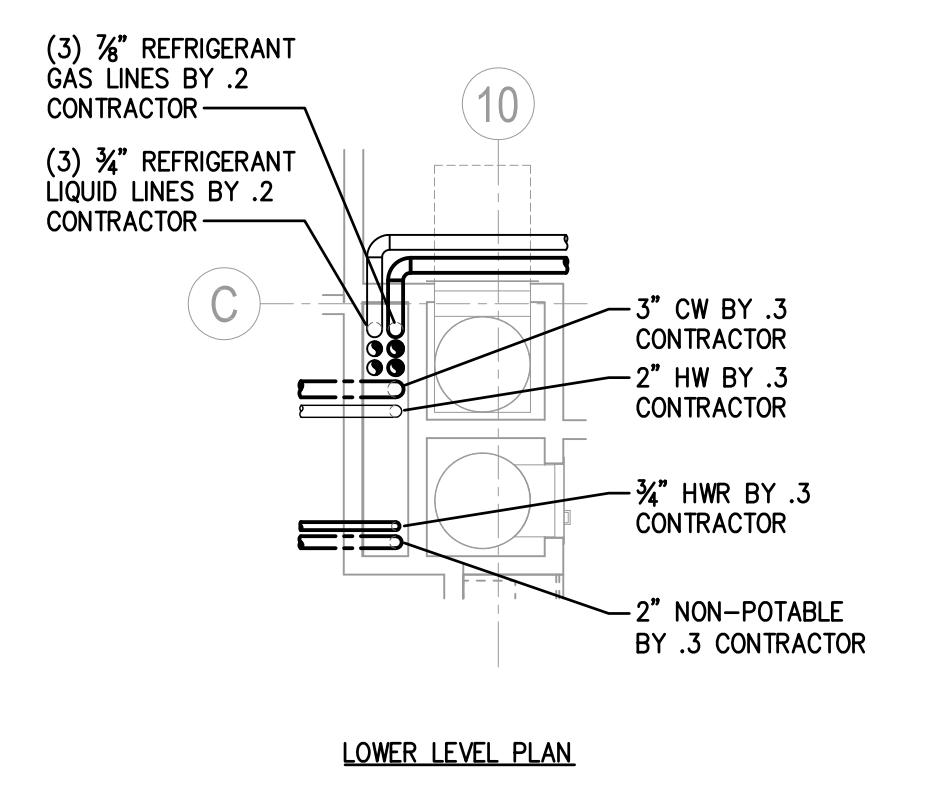


5 PIPE HANGER DETAIL
SCALE: N.T.S.

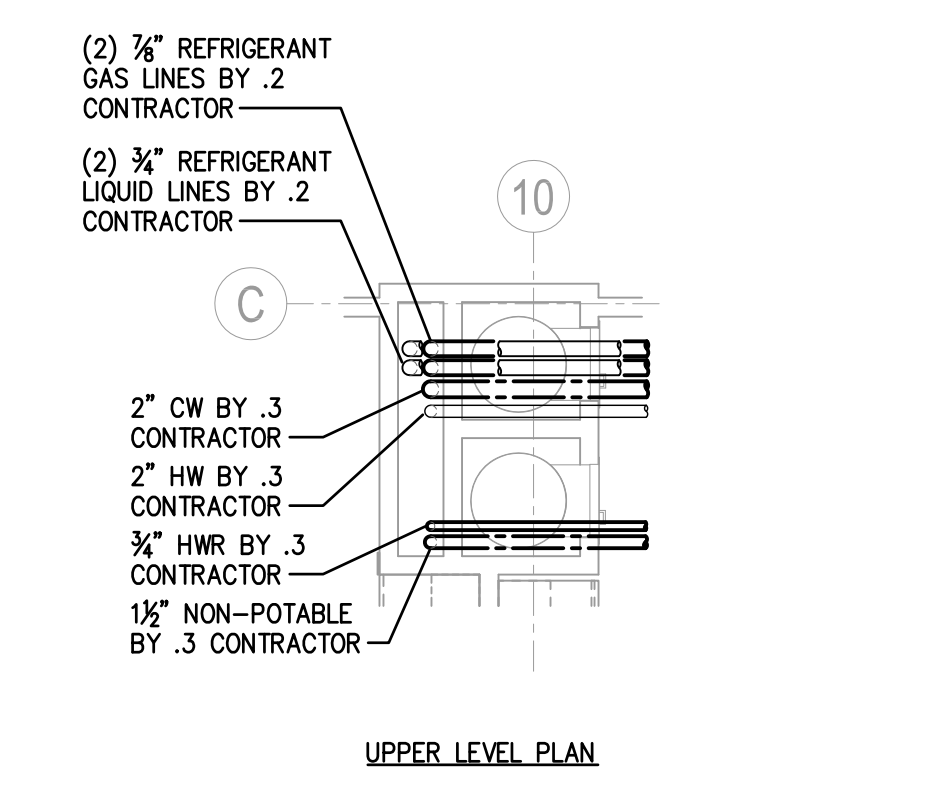
NOTE: REFER TO SPECIFICATIONS FOR HANGER ROD SIZES AND SPACING. THE SPACING SHOWN IN SPECIFICATION IS MAXIMUM SPACING PIPE WILL SPAN. THE HANGER SUPPORTS AND STRUCTURAL ELEMENTS OF THE BUILDING SHOULD BE CHECKED FOR LOAD SUPPORT. SPACING MAY HAVE TO BE REDUCED TO LIGHTEN LOAD ON CERTAIN HANGER SUPPORTS. DERATE EXP. SHIELDS BY 50%.



BASEMENT PLAN

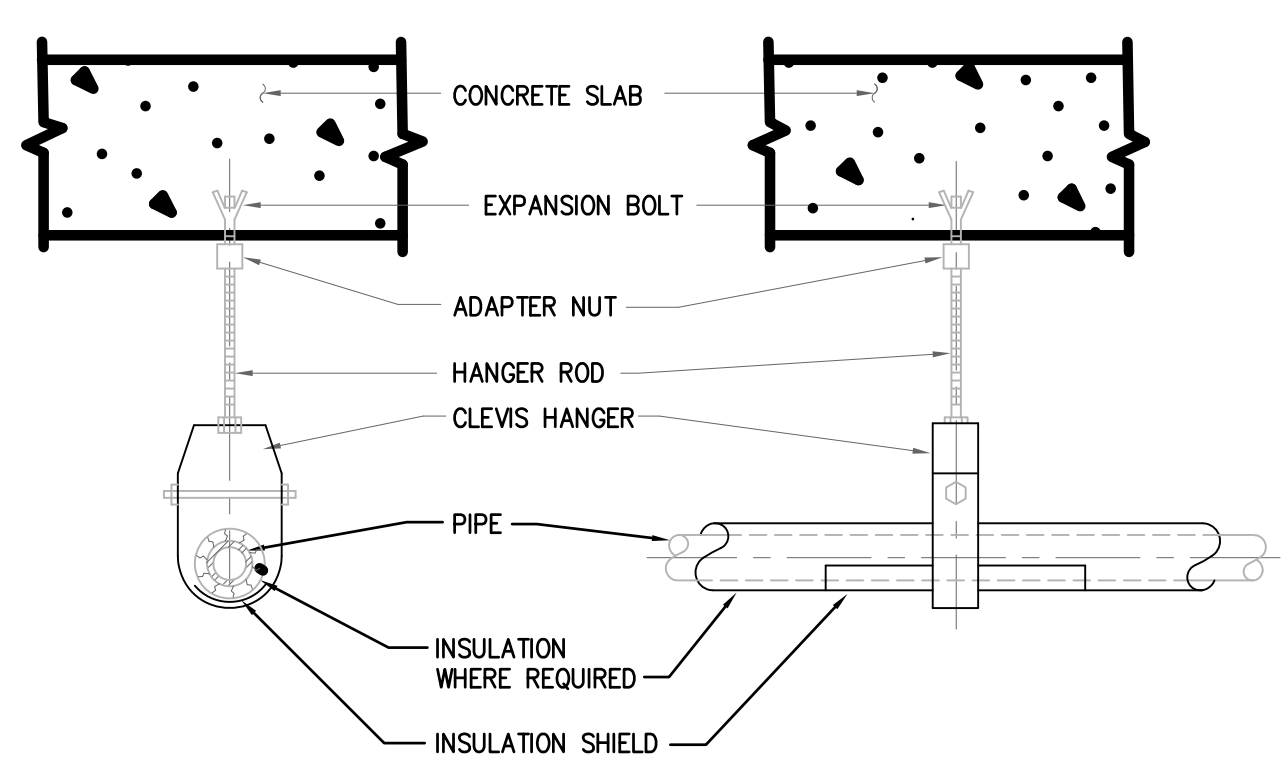


LOWER LEVEL PLAN



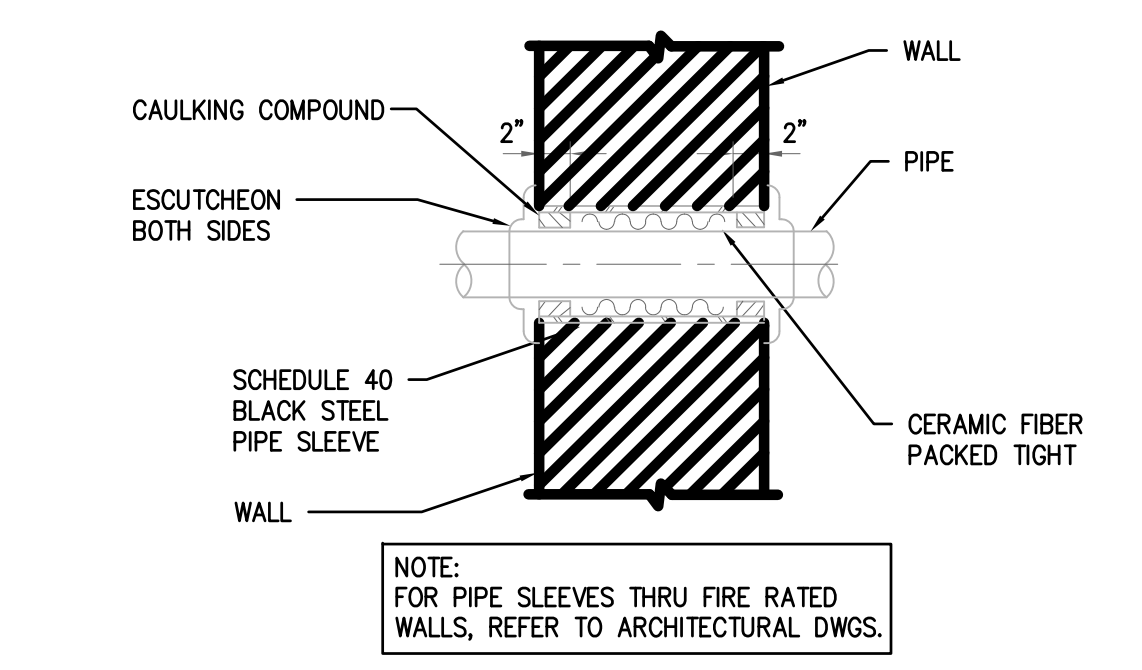
UPPER LEVEL PLAN

6 CHASE DETAILS
SCALE: N.T.S.



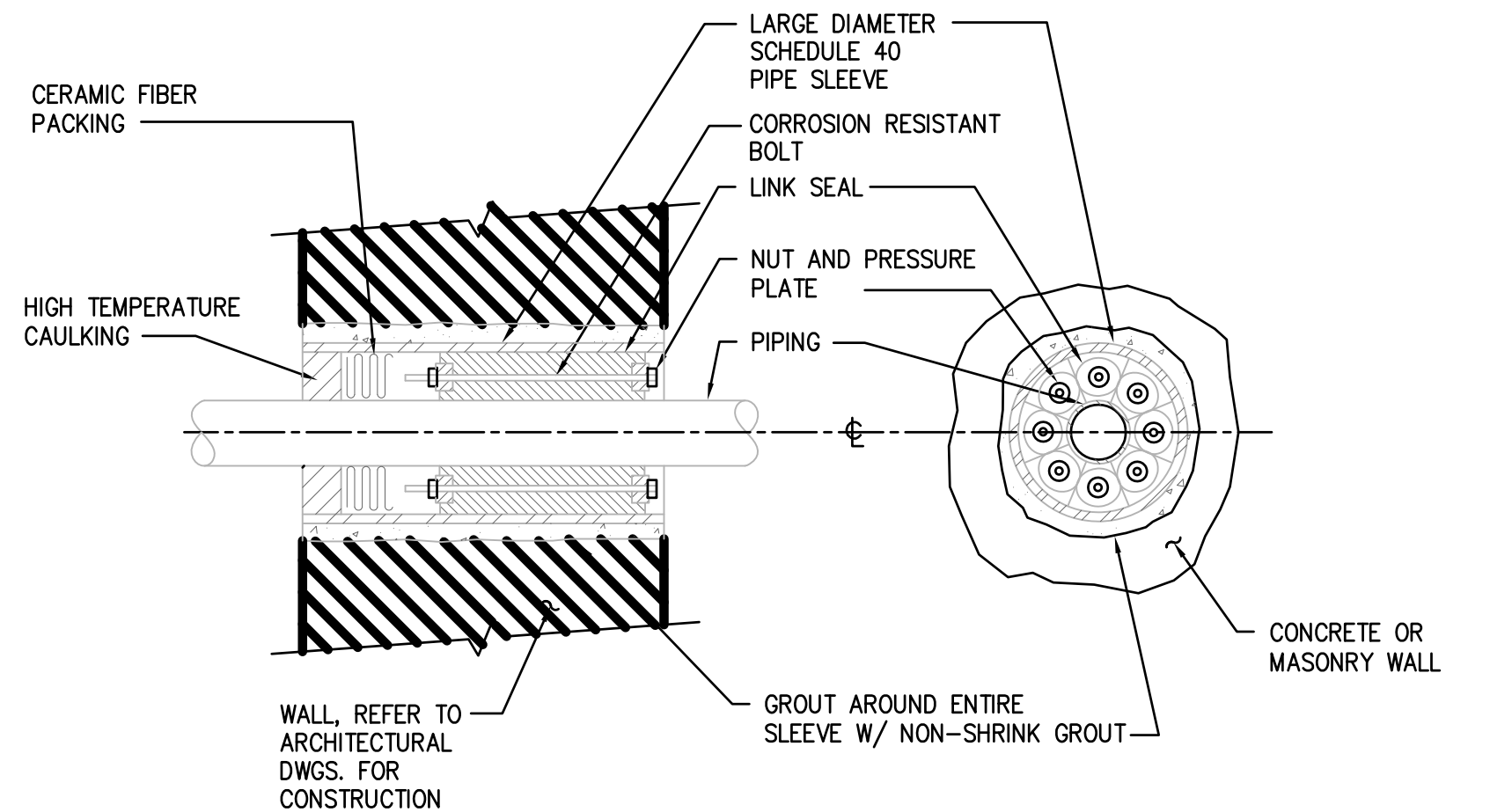
NOTE: HANGER DETAIL FOR DOMESTIC, SANITARY, STORM AND VENT PIPING

8 PIPE HANGER DETAIL
SCALE: N.T.S.



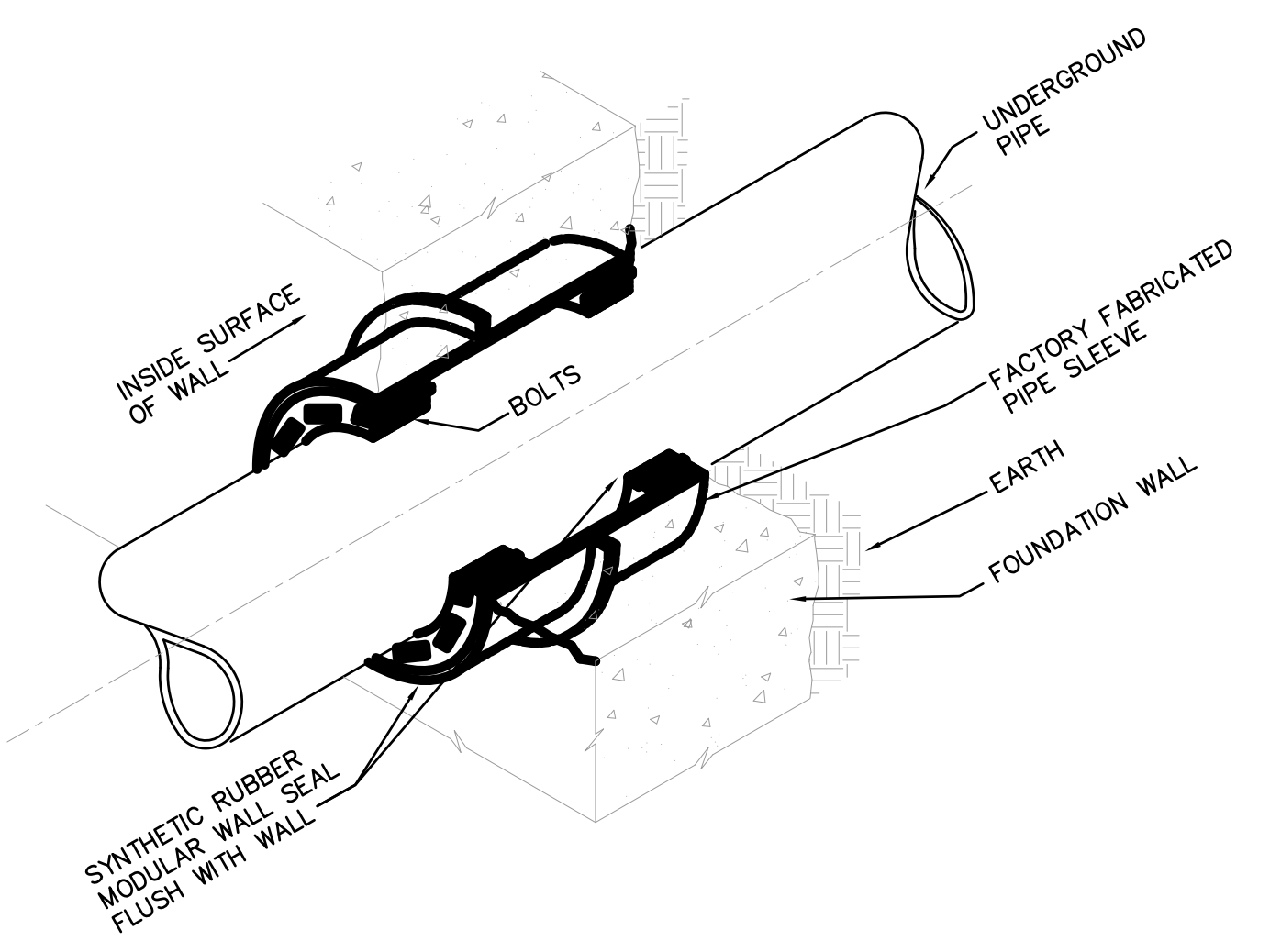
NOTE: FOR PIPE SLEEVES THRU FIRE RATED WALLS, REFER TO ARCHITECTURAL DWGS.

7 PIPE SLEEVE THRU WALL DETAIL
SCALE: N.T.S.

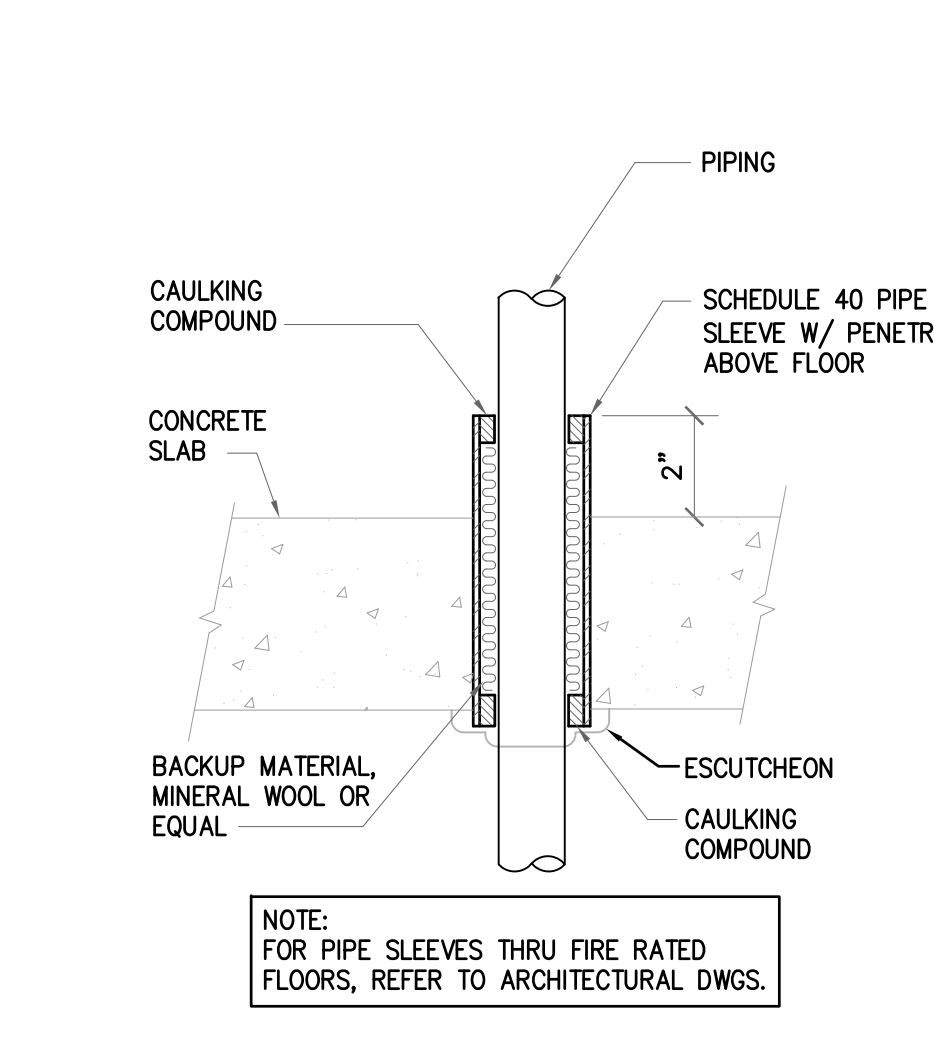


NOTE: COORDINATE INSTALLATION AND SEALING REQUIREMENTS OF PIPE SLEEVES THRU WALLS WITH THE ARCHITECTURAL DWGS.

9 EXTERIOR WALL PIPE SLEEVE DETAIL
SCALE: N.T.S.

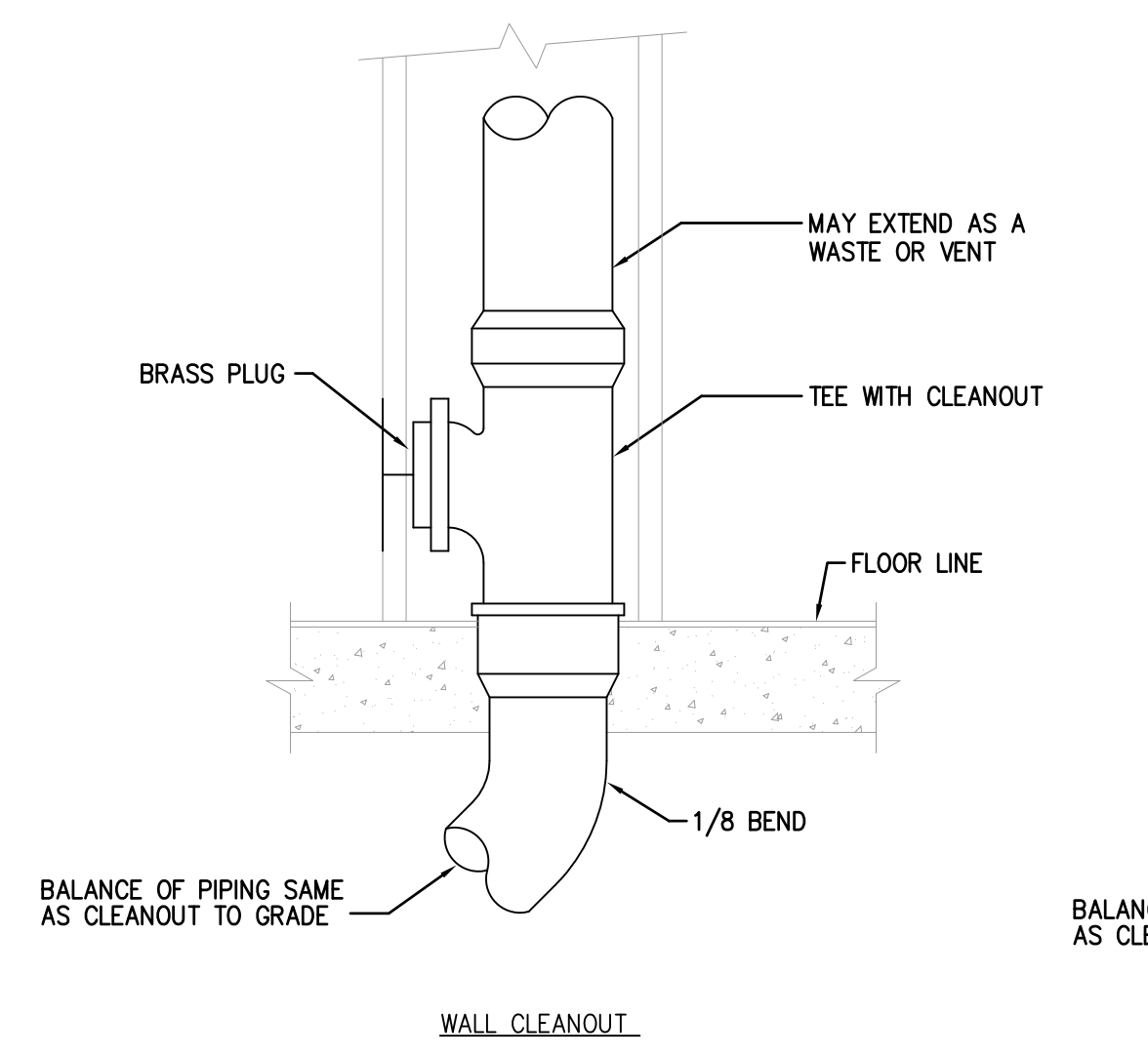


10 BELOW GRADE PIPE SEAL DETAIL
SCALE: N.T.S.



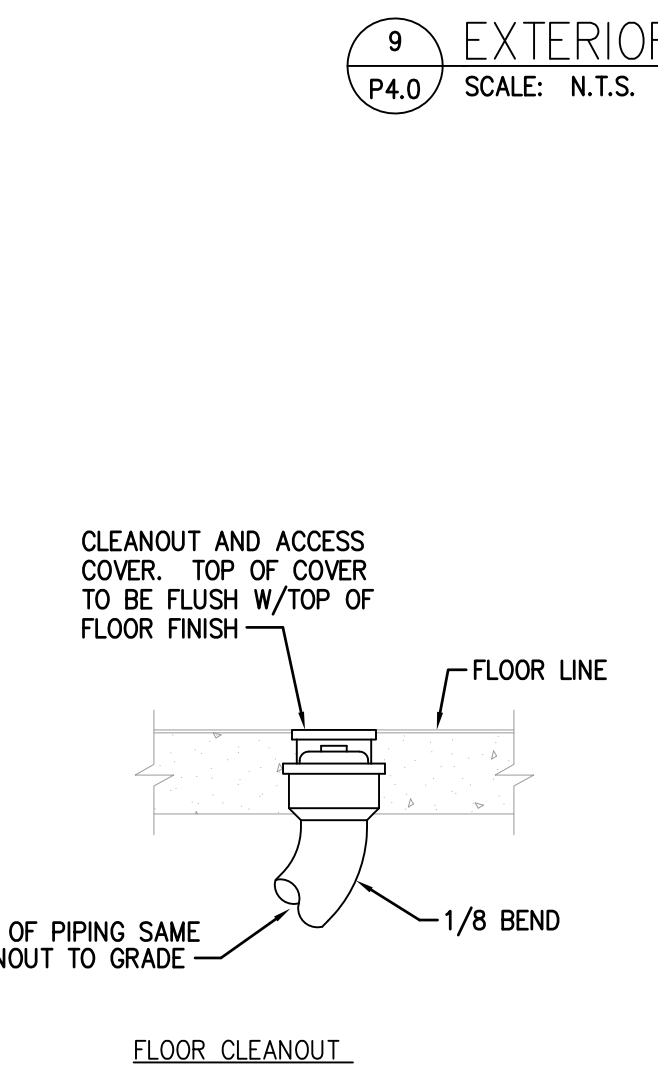
NOTE: FOR PIPE SLEEVES THRU FIRE RATED FLOORS, REFER TO ARCHITECTURAL DWGS.

11 THRU FLOOR PIPE SLEEVE DETAIL
SCALE: N.T.S.



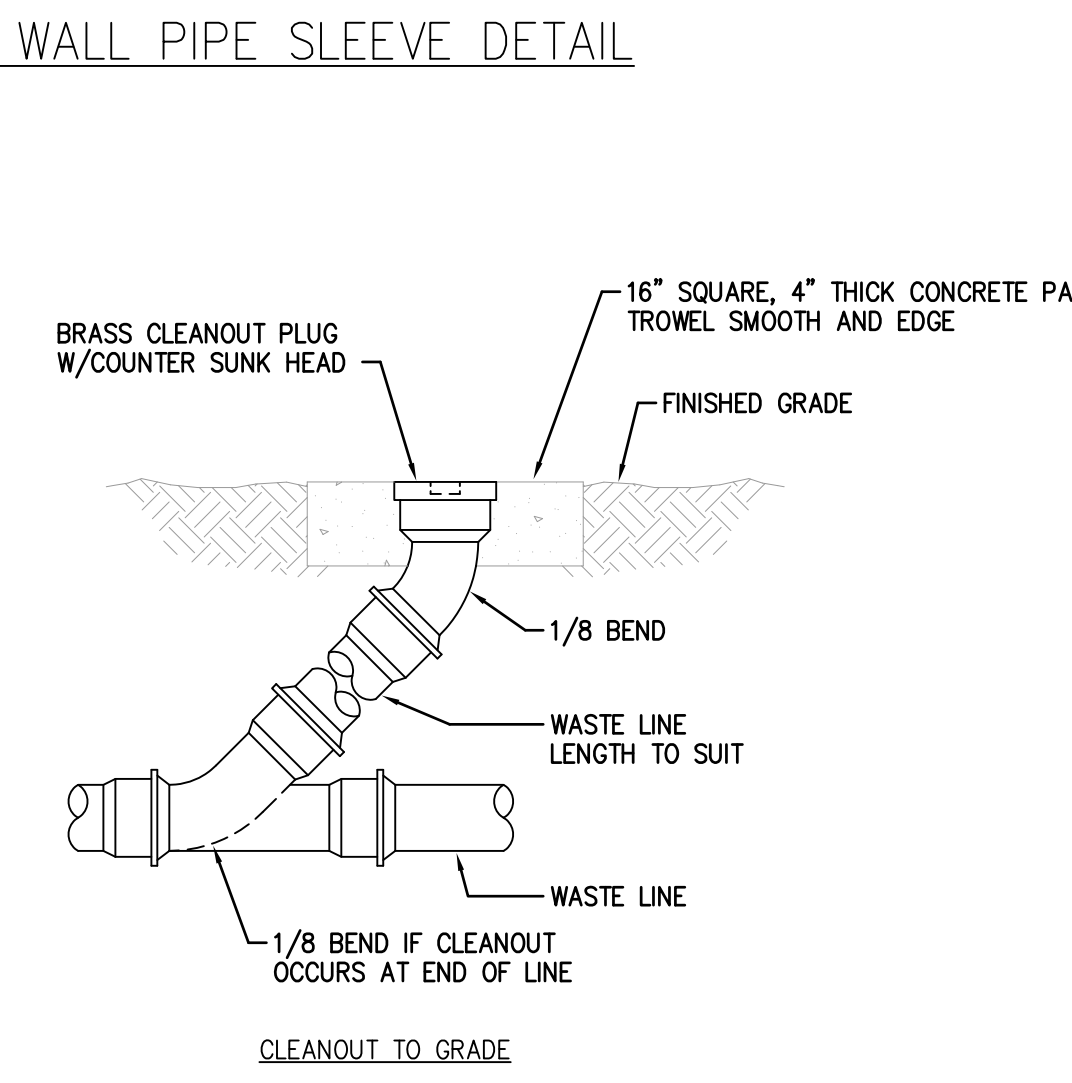
NOTE: BALANCE OF PIPING SAME AS CLEANOUT TO GRADE

WALL CLEANOUT



NOTE: BALANCE OF PIPING SAME AS CLEANOUT TO GRADE

FLOOR CLEANOUT



NOTE: BALANCE OF PIPING SAME AS CLEANOUT TO GRADE

CLEANOUT TO GRADE

12 CLEANOUT DETAILS
SCALE: N.T.S.

THIS RECORD DRAWING HAS BEEN PREPARED ON INFORMATION PROVIDED BY OTHERS. THE DESIGN PROFESSIONAL HAS NOT VERIFIED THE ACCURACY AND/OR COMPLETENESS OF THIS INFORMATION AND SHALL NOT BE RESPONSIBLE FOR ANY ERRORS OR OMISSIONS WHICH MAY BE INCORPORATED HEREIN AS A RESULT.

PROJECT NUMBER 20070085

150170	RECORD DRAWING		
1	ISSUED FOR CONSTRUCTION		
NO.	DATE	REVISION	APPR.
SUBMITTED		PROJECT COORDINATOR	
PROJECT DESIGNER		PROJECT COORDINATOR	
APPROVED		CHIEF - DIVISION OF DESIGN	
APPROVED		DIRECTOR - BUREAU OF FACILITY DESIGN AND CONSTRUCTION	

COMMONWEALTH OF PENNSYLVANIA
DEPARTMENT OF CONSERVATION AND NATURAL RESOURCES
OFFICE OF PARKS AND FORESTRY

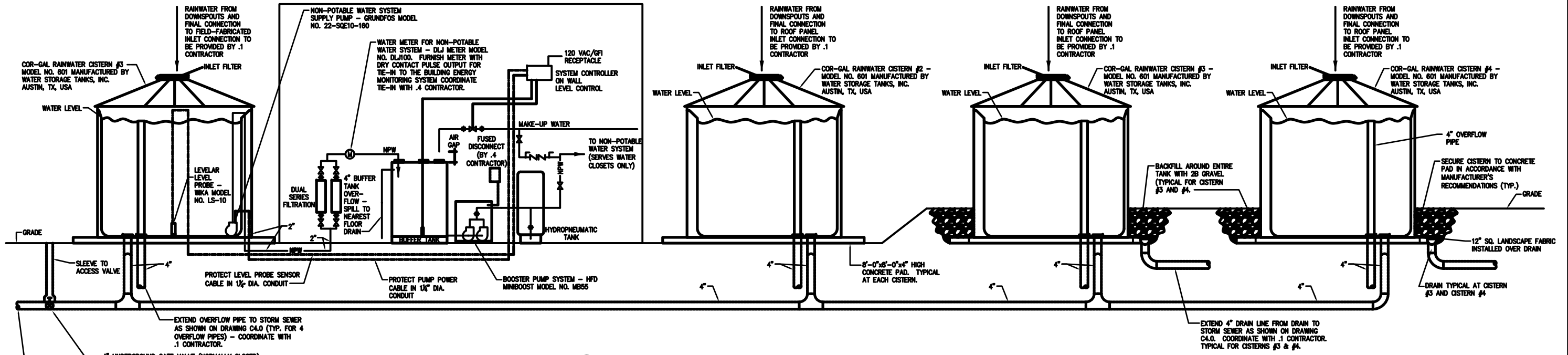
PROJECT NO: FDC-133-4494
APPLICABLE CONTRACT NO'S.

GENERAL:	PLUMBING: FDC-133-4494.3
HVAC:	ELECTRICAL:
ROADWAY:	

THE INN AT BALD EAGLE STATE PARK
HOWARD AND LIBERTY TOWNSHIP,
CENTRE COUNTY, PENNSYLVANIA

PLUMBING DETAILS

DRAWN BY:	DATE:	DRAWING NO.:
JPB	09-03-08	P4.0
CHECKED BY:	SCALE:	
DPA	AS NOTED	



1 RAINWATER MANAGEMENT SCHEMATIC DETAIL
SCALE: N.T.S.

- NOTES:**
1. DOWNSPOUTS AND FINAL CONNECTION OF DOWNSPOUTS TO CISTERNS BE MADE BY .1 CONTRACTOR.
 2. ENTIRE INSTALLATION SHALL BE IN STRICT ACCORDANCE WITH MANUFACTURER'S RECOMMENDATIONS.

THIS RECORD DRAWING HAS BEEN PREPARED ON INFORMATION PROVIDED BY OTHERS. THE DESIGN PROFESSIONAL HAS NOT VERIFIED THE ACCURACY AND/OR COMPLETENESS OF THIS INFORMATION AND SHALL NOT BE RESPONSIBLE FOR ANY ERRORS OR OMISSIONS WHICH MAY BE INCORPORATED HEREIN AS A RESULT.

LLI ENGINEERING
PROJECT NUMBER: 20070085

NO.	DATE	REVISION	APPROV.
1	09/03/08	ISSUED FOR CONSTRUCTION	

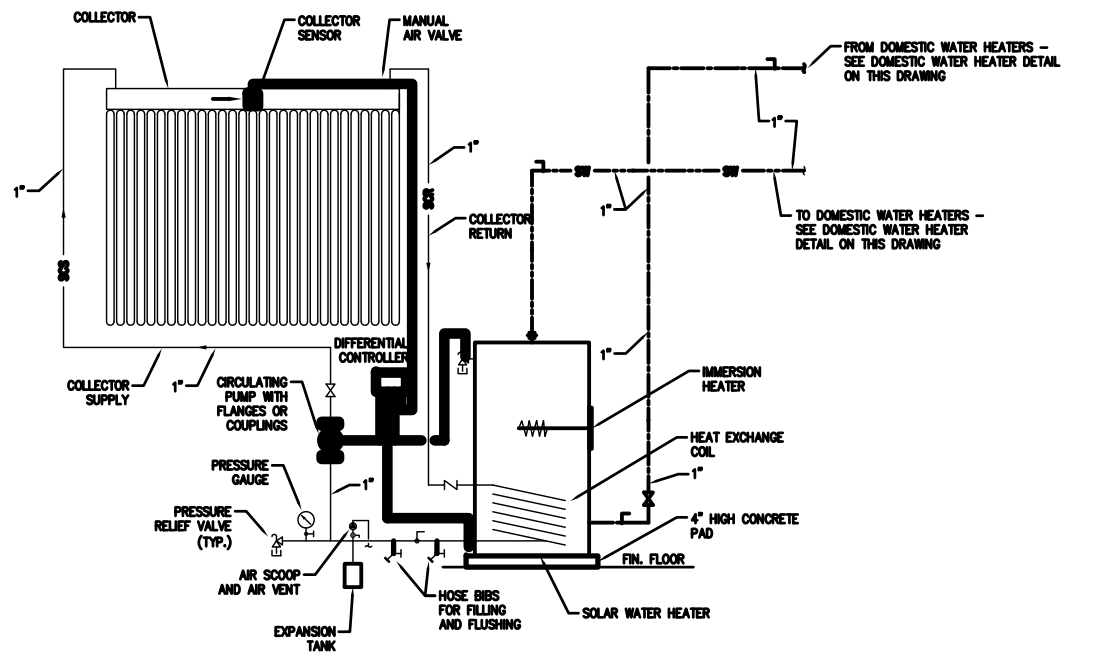
COMMONWEALTH OF PENNSYLVANIA
DEPARTMENT OF CONSERVATION AND NATURAL RESOURCES
OFFICE OF PARKS AND FORESTRY

PROJECT NO: FDC-133-4494
APPLICABLE CONTRACT NO'S:
GENERAL: PLUMBING: FDC-133-4494.3
HVAC: ELECTRICAL:
ROADWAY:

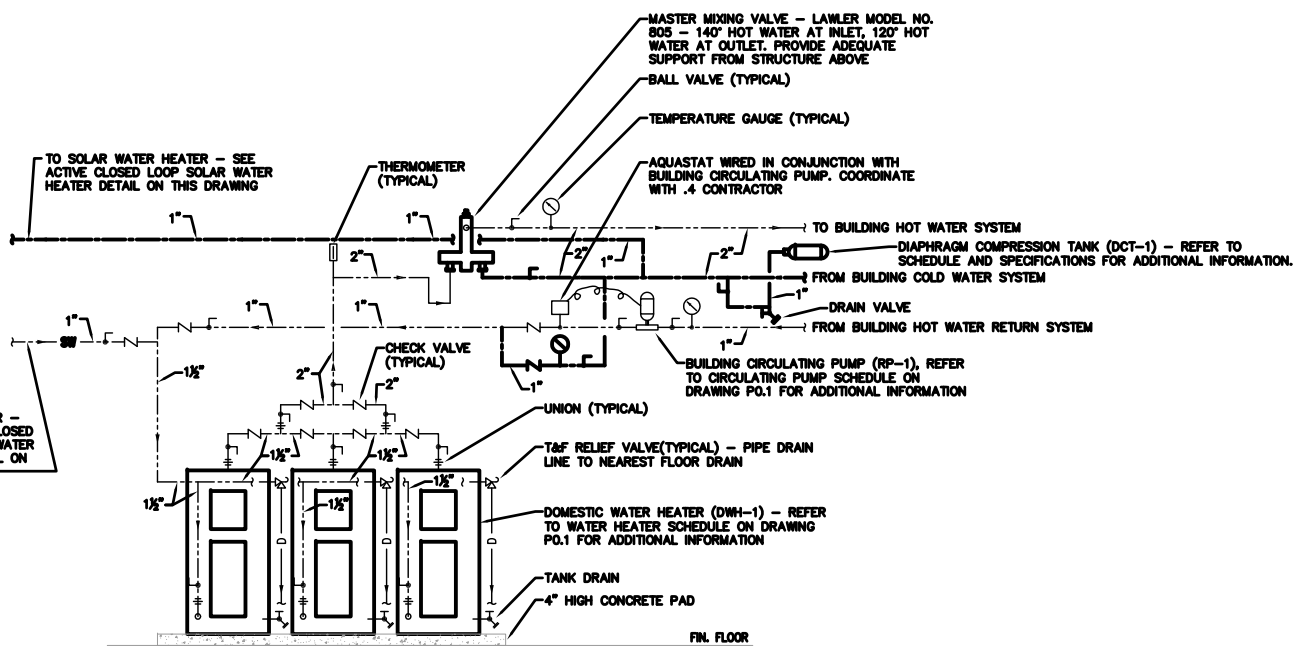
THE INN AT BALD EAGLE STATE PARK
HOWARD AND LIBERTY TOWNSHIP,
CENTRE COUNTY, PENNSYLVANIA

PLUMBING DETAILS

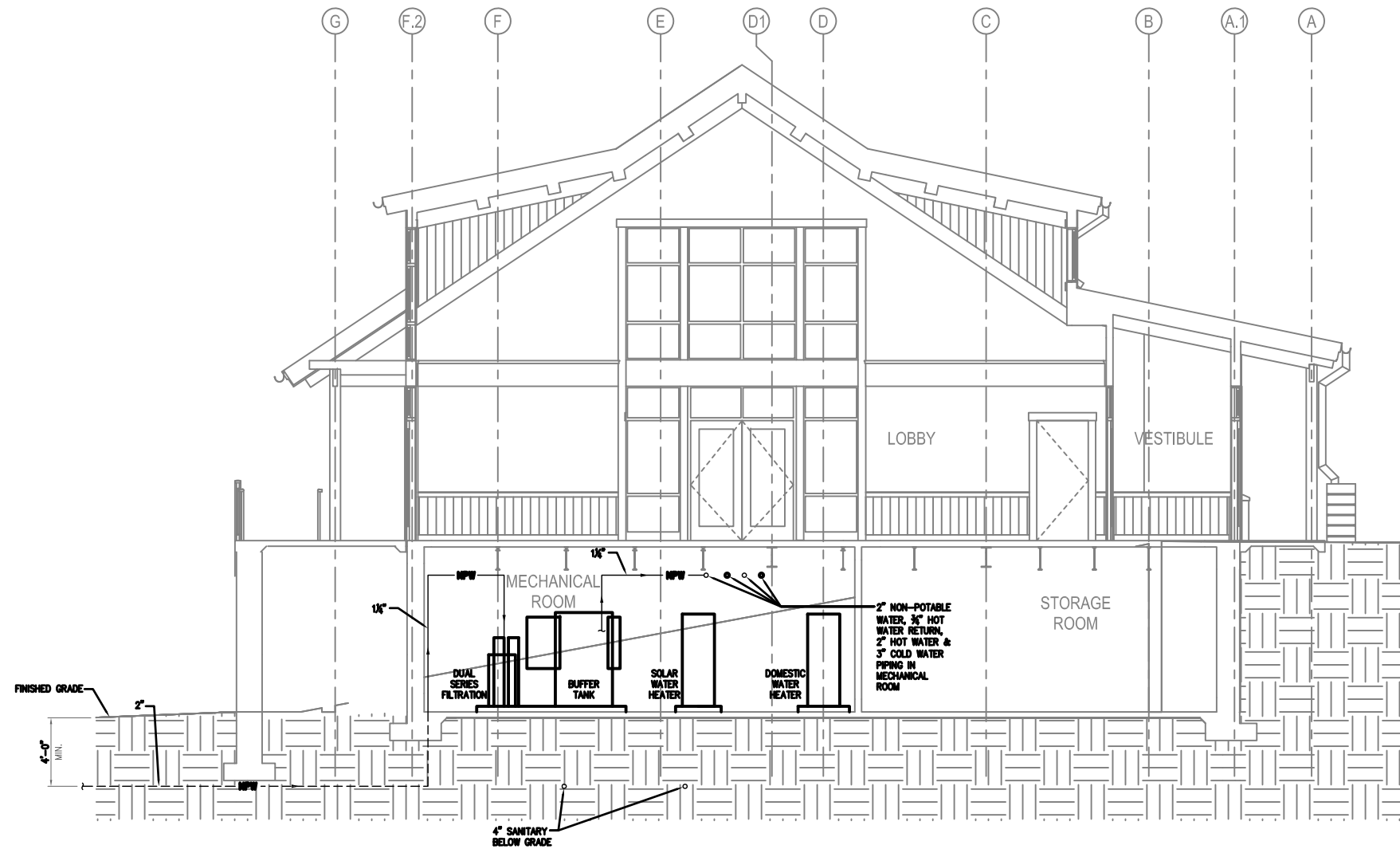
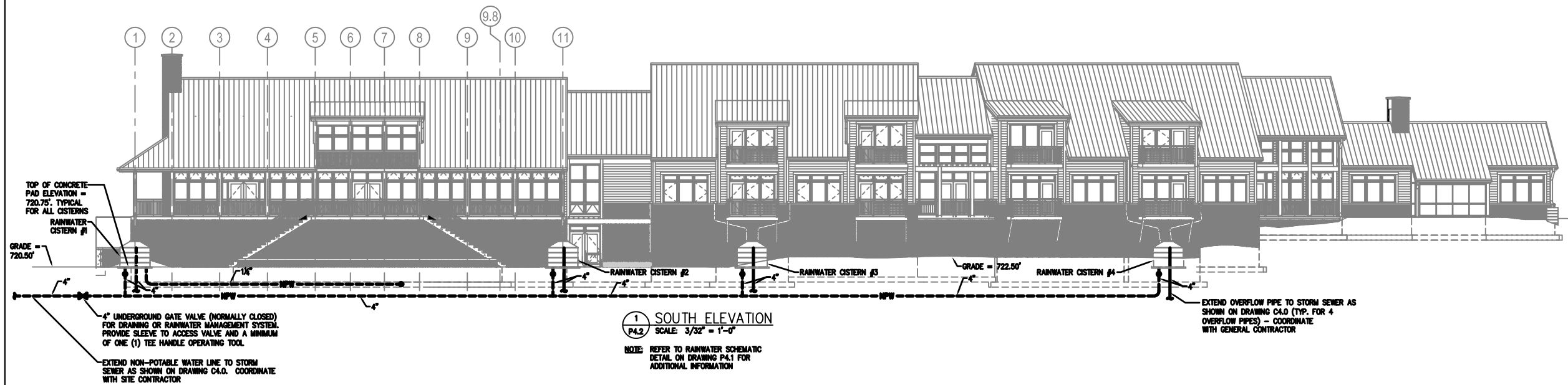
DRAWN BY: PWM DATE: 09-03-08 DRAWING NO: P4.1
CHECKED BY: DPA SCALE: AS NOTED



2 ACTIVE CLOSED LOOP SOLAR WATER HEATING SYSTEM DETAIL
SCALE: N.T.S.

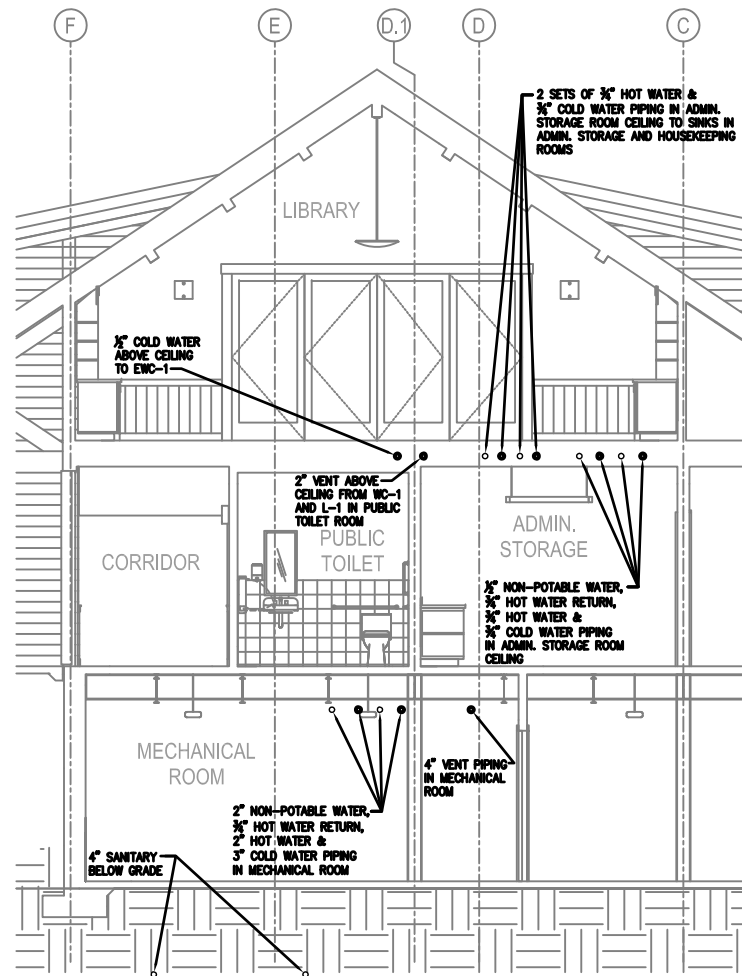


3 DOMESTIC WATER HEATER DETAIL
SCALE: N.T.S.

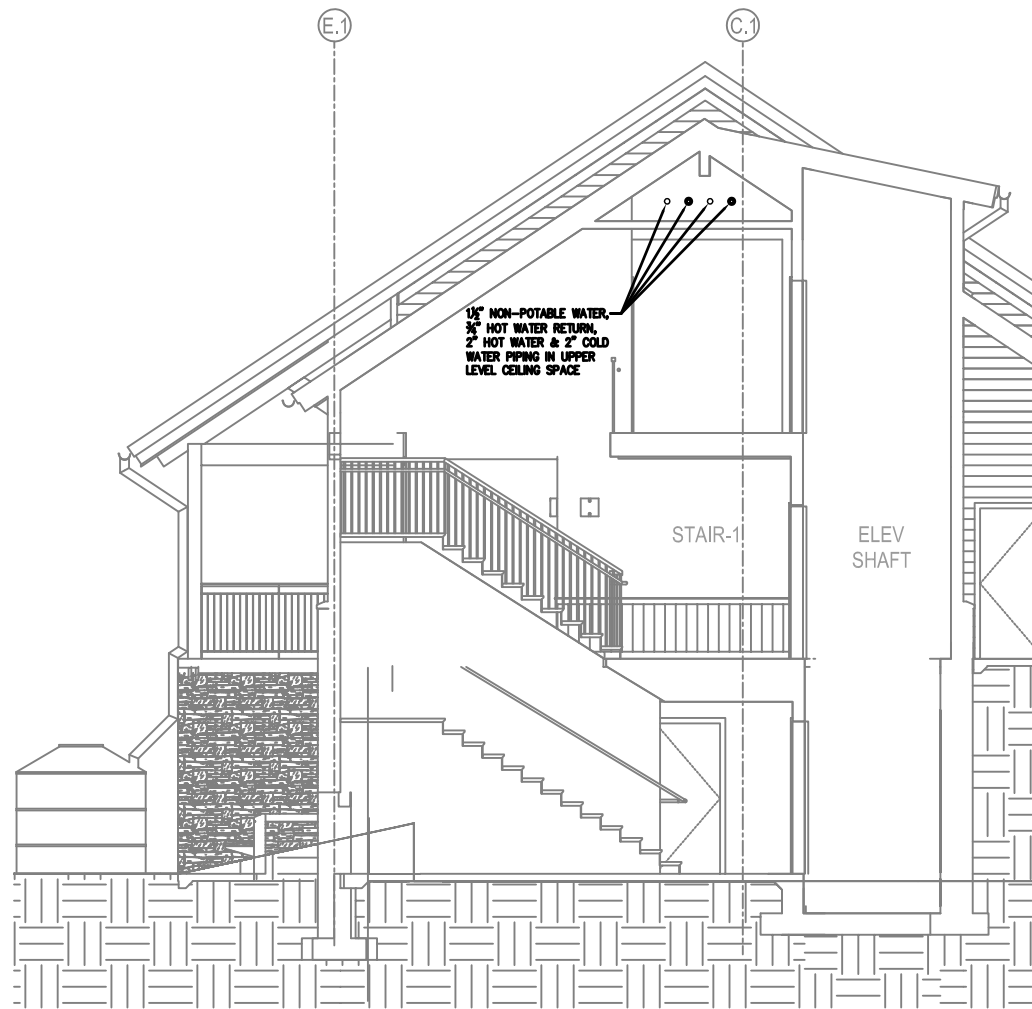


THIS RECORD DRAWING HAS BEEN PREPARED ON INFORMATION PROVIDED BY OTHERS. THE DESIGN PROFESSIONAL HAS NOT VERIFIED THE ACCURACY AND/OR COMPLETENESS OF THIS INFORMATION AND SHALL NOT BE RESPONSIBLE FOR ANY ERRORS OR OMISSIONS WHICH MAY BE INCORPORATED HEREIN AS A RESULT.

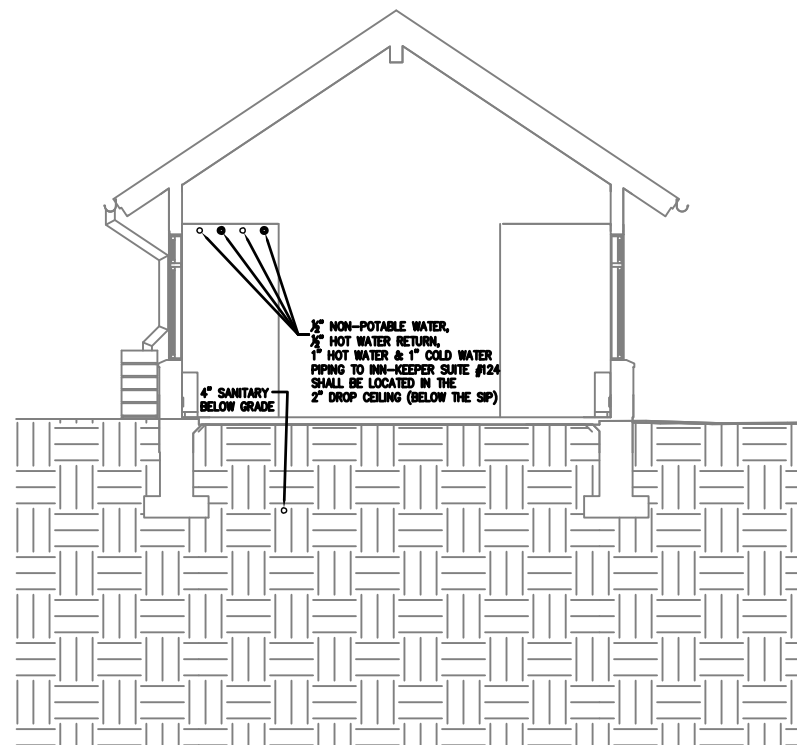
LI ENGINEERING		PROJECT NUMBER
4000 BROADWAY, SUITE 200, WESTPHAL, PA 19380-1000		20070085
1	ISSUED FOR CONSTRUCTION	
NO.	DATE	REVISION
SUBMITTED		
PROJECT DESIGNER		PROJECT COORDINATOR
APPROVED		
CHIEF - DIVISION OF DESIGN		
APPROVED		
DIRECTOR - BUREAU OF FACILITY DESIGN AND CONSTRUCTION		
COMMONWEALTH OF PENNSYLVANIA DEPARTMENT OF CONSERVATION AND NATURAL RESOURCES OFFICE OF PARKS AND FORESTRY		
PROJECT NO: FDC-133-4494		
APPLICABLE CONTRACT NO'S.		
GENERAL:	PLUMBING: FDC-133-4494.3	
HVAC:	ELECTRICAL:	
ROADWAY:		
THE INN AT BALD EAGLE STATE PARK HOWARD AND LIBERTY TOWNSHIP, CENTRE COUNTY, PENNSYLVANIA		
PLUMBING SECTION AND DETAIL		
DRAWN BY: JPB	DATE: 09-03-08	DRAWING NO.:
CHECKED BY: DPA	SCALE: AS NOTED	P4.2



1 SECTION @ LIBRARY #208
SCALE: 1/4" = 1'-0"



2 SECTION @ STAIR-1 #212
SCALE: 1/4" = 1'-0"



3 SECTION @ INN-KEEPER SUITE #124
SCALE: 1/4" = 1'-0"

THIS RECORD DRAWING HAS BEEN PREPARED ON INFORMATION PROVIDED BY OTHERS. THE DESIGN PROFESSIONAL HAS NOT VERIFIED THE ACCURACY AND/OR COMPLETENESS OF THIS INFORMATION AND SHALL NOT BE RESPONSIBLE FOR ANY ERRORS OR OMISSIONS WHICH MAY BE INCORPORATED HEREIN AS A RESULT.

LI ENGINEERING PROJECT NUMBER
20070085

NO.	DATE	REVISION	APPL.
1		ISSUED FOR CONSTRUCTION	
2		RECORD DRAWING	

PROJECT DESIGNER	PROJECT COORDINATOR
APPROVED	CHIEF-DEVISION OF DESIGN
APPROVED	DIRECTOR - BUREAU OF FACILITY DESIGN AND CONSTRUCTION

COMMONWEALTH OF PENNSYLVANIA
DEPARTMENT OF CONSERVATION AND NATURAL RESOURCES
OFFICE OF PARKS AND FORESTRY

PROJECT NO: FDC-133-4494

GENERAL:	PLUMBING: FDC-133-4494.3
HVAC:	ELECTRICAL:
ROADWAY:	

THE INN AT BALD EAGLE STATE PARK
HOWARD AND LIBERTY TOWNSHIP,
CENTRE COUNTY, PENNSYLVANIA

PLUMBING SECTIONS

DRAWN BY: JPB	DATE: 09-03-08	DRAWING NO: P4.3
CHECKED BY: DPA	SCALE: AS NOTED	