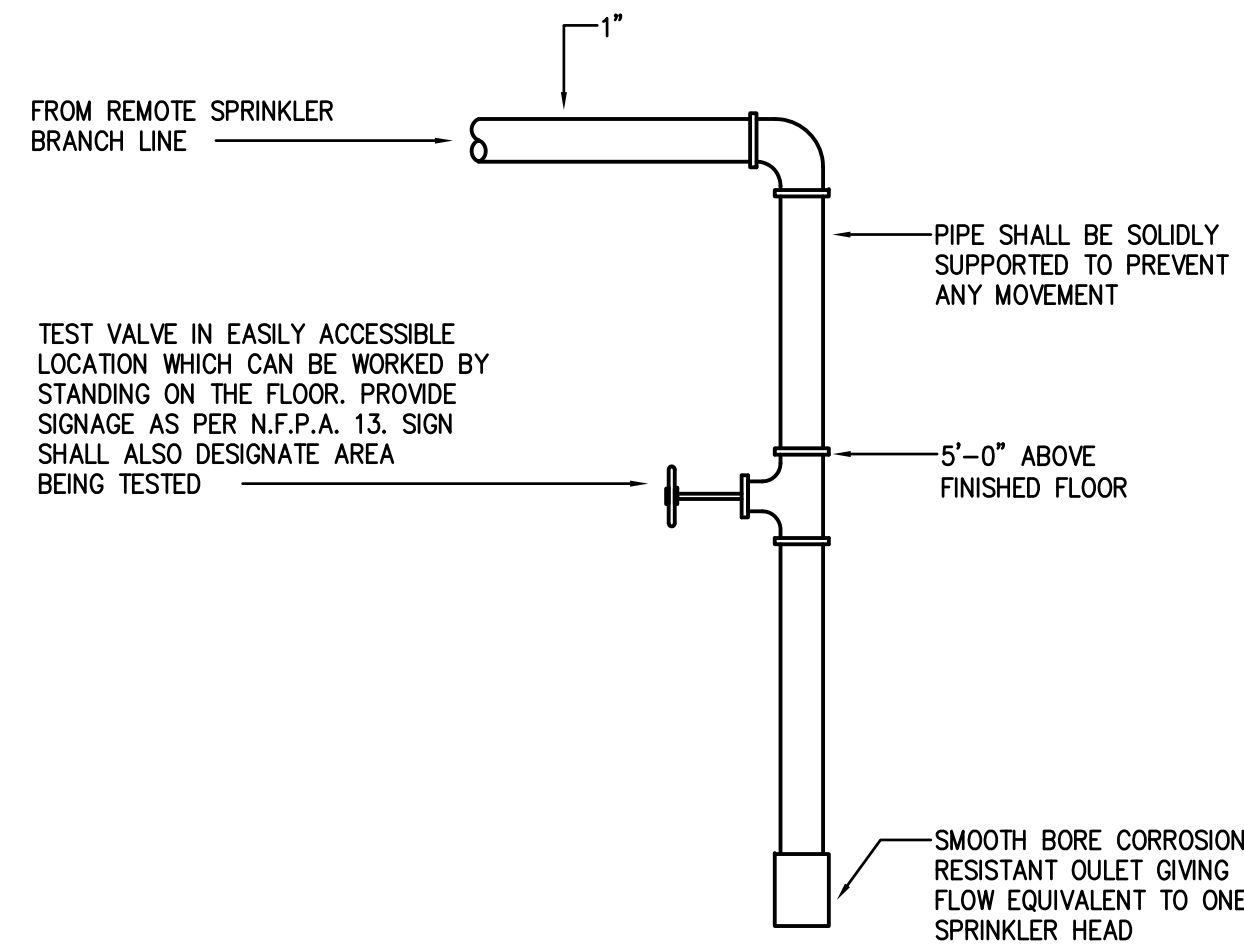


FIRE PROTECTION SYMBOLS AND ABBREVIATIONS

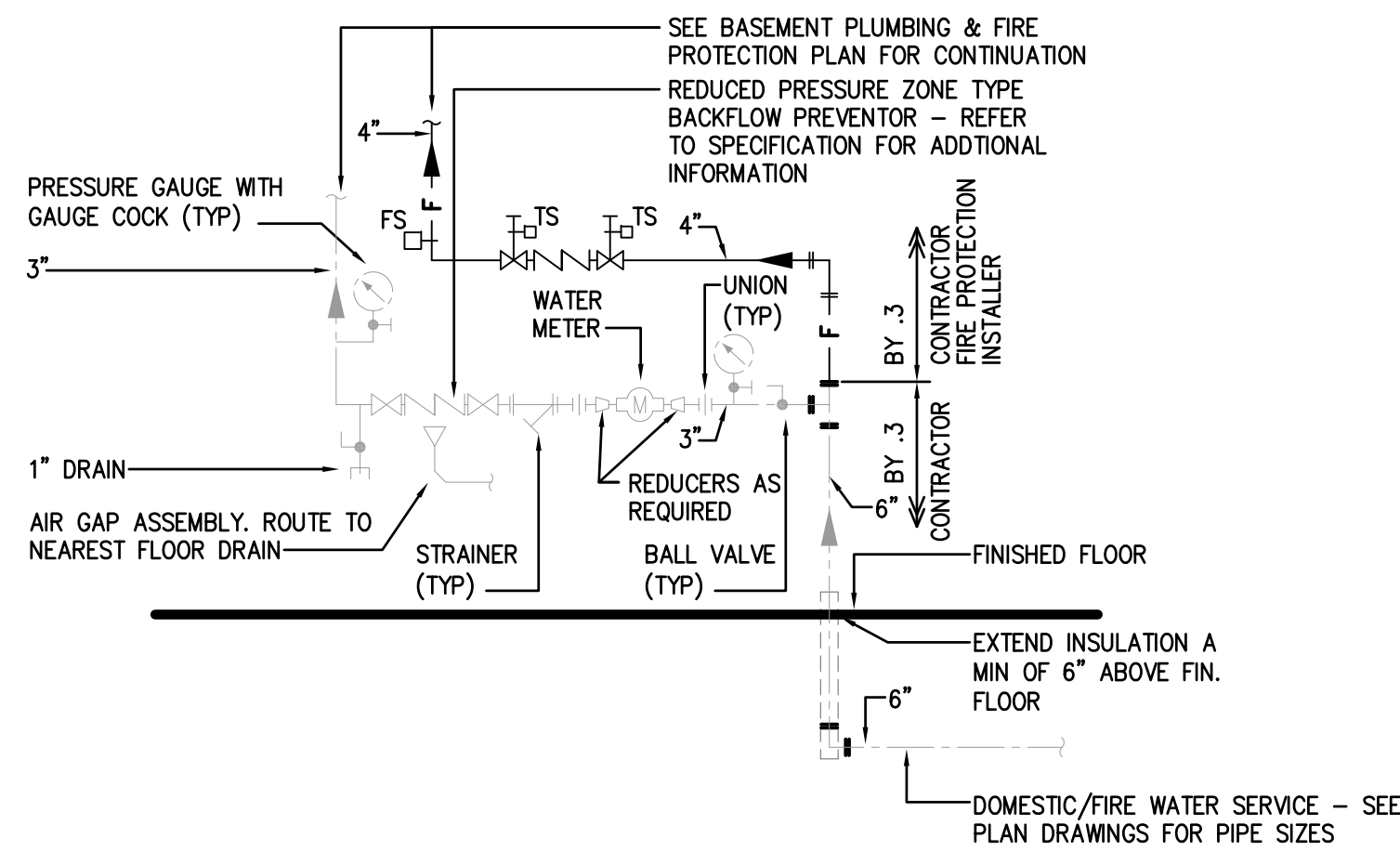
—————	NEW WORK		FLOOR DRAIN	A.F.F.	ABOVE FINISHED FLOOR
-----	DEMOLITION		GATE VALVE WITH TAMPER SWITCH	E.C.	ELECTRICAL CONTRACTOR
—SPR—	SPRINKLER LINE (WET SYSTEM)		CHECK VALVE	G.C.	GENERAL CONTRACTOR
—DRY—	SPRINKLER LINE (DRY SYSTEM)		BACKFLOW PREVENTER	P.C.	PLUMBING CONTRACTOR
— F —	FIRE SPRINKLER PIPING	AFF	ABOVE FINISHED FLOOR	F.P.C.	FIRE PROTECTION CONTRACTOR
	PENDANT SPRINKLER HEAD	TYP	TYPICAL		
	CONCEALED SPRINKLER HEAD	ARF	ABOVE RAISED FLOOR	FHC	FIRE HOSE CABINET
	SIDE WALL SPRINKLER HEAD	B/	BOTTOM OF	FHR	FIRE HOSE RACK (REEL)
	UPRIGHT SPRINKLER HEAD	CW	DOMESTIC COLD WATER PIPING	F.P.	FIRE ALARM PANEL
	DIRECTION OF FLOW	D.F.	DRINKING FOUNTAIN	F.V.C.	FIRE VALVE CABINET
— D —	DRAIN	DN	DOWN	GPM	GALLONS PER MINUTE
	ELBOW TURNED UP	DWG.	DRAWING	MAX.	MAXIMUM
	ELBOW TURNED DOWN	EL.	ELEVATION	REQ'D	REQUIRED
	TEE TURNED UP	E.P.	ELECTRIC PANEL	SQ. FT.	SQUARE FOOT
	TEE TURNED DOWN	EXIST.	EXISTING	T/	TOP OF
	GROUND JOINT UNION		STRAINER	TYP.	TYPICAL
	FLANGED UNION		FLOW SWITCH		
	CAP		PRESSURE GAUGE		
	BALL VALVE				

GENERAL NOTES:

- A. COORDINATE ALL WORK WITH OTHER TRADES PRIOR TO THE FABRICATION OR INSTALLATION OF ANY PIPING.
- B. THE DRAWINGS ARE DIAGRAMMATIC. THE .3 CONTRACTOR FIRE PROTECTION INSTALLER MUST FIELD VERIFY ACTUAL CONDITIONS AT THE SITE PRIOR TO PROCEEDING WITH THE WORK.
- C. PROVIDE SLEEVES AND FIRESTOP SEALANTS WHERE PIPES PENETRATE FIRE RATED FLOORS AND WALLS. COMPLY WITH ASTM E-814 AND UL 1479.
- D. CONFORM TO FM, NFPA REQUIREMENTS AND/OR OWNERS INSURANCE UNDERWRITER. OBTAIN PERMITS AND REVIEW STAMPS FROM THE AUTHORITIES HAVING JURISDICTION.
- E. SUBMIT SHOP DRAWINGS AND HYDRAULIC CALCULATIONS TO AUTHORITIES HAVING JURISDICTION AS DIRECTED BY THE DEPARTMENT. FOLLOWING RECEIPT OF COMMENTS/APPROVALS FROM AUTHORITIES, SUBMIT SHOP DRAWINGS, HYDRAULIC CALCULATIONS, AND EQUIPMENT DATA TO THE DEPARTMENT.
- F. CONTRACTOR IS RESPONSIBLE FOR ALL PERMITS REQUIRED TO EXECUTE THE WORK.
- G. ROOM DESIGN METHOD SHALL NOT BE USED.
- H. PROVIDE MEANS FOR FORWARD FLOW TEST OF BACKFLOW PREVENTION DEVICE AS REQUIRED BY NFPA 13.
- I. CENTER HEADS IN CEILING TILES. VERIFY BEFORE INSTALLATION, THE EXACT CEILING TYPE AND PATTERN.
- J. COORDINATE FINAL LOCATIONS OF SPRINKLER HEADS, PIPING, AND ALL NEW WORK WITH ALL LIGHT FIXTURES, DIFFUSERS, GRILLES, REGISTERS, SMOKE DETECTORS, SPEAKERS, AND OTHER CEILING MOUNTED DEVICES.
- K. PIPING SHOWN IS ABOVE THE CEILING UNLESS OTHERWISE NOTED.
- L. ALL CONTROL VALVES SHALL BE MONITORED.



1 SPRINKLER INSPECTORS TEST AND DRAIN DETAIL (INTERIOR)
 FP0.1 SCALE: N.T.S.
 NOTE: THE ENTIRE INSTALLATION SHALL COMPLY WITH N.F.P.A. 13.



2 DOMESTIC WATER/FIRE SERVICE ENTRANCE DETAIL
 FP0.1 SCALE: N.T.S.
 NOTE: ENTIRE INSTALLATION SHALL BE IN STRICT ACCORDANCE WITH THE LOCAL WATER AUTHORITIES RULES & REGULATIONS.

THIS RECORD DRAWING HAS BEEN PREPARED ON INFORMATION PROVIDED BY OTHERS. THE DESIGN PROFESSIONAL HAS NOT VERIFIED THE ACCURACY AND/OR COMPLETENESS OF THIS INFORMATION AND SHALL NOT BE RESPONSIBLE FOR ANY ERRORS OR OMISSIONS WHICH MAY BE INCORPORATED HEREIN AS A RESULT.

LLI ENGINEERING
 6000 BROOKTREE ROAD, SUITE 300 WEXFORD, PA 724 934-8800
 PROJECT NUMBER 20070085

1	09/03/08	ISSUED FOR CONSTRUCTION	
NO.	DATE	REVISION	APPR.

SUBMITTED	PROJECT DESIGNER	PROJECT COORDINATOR
APPROVED	CHIEF - DIVISION OF DESIGN	
APPROVED	DIRECTOR - BUREAU OF FACILITY DESIGN AND CONSTRUCTION	

COMMONWEALTH OF PENNSYLVANIA
 DEPARTMENT OF CONSERVATION AND NATURAL RESOURCES
 OFFICE OF PARKS AND FORESTRY

PROJECT NO: FDC-133-4494

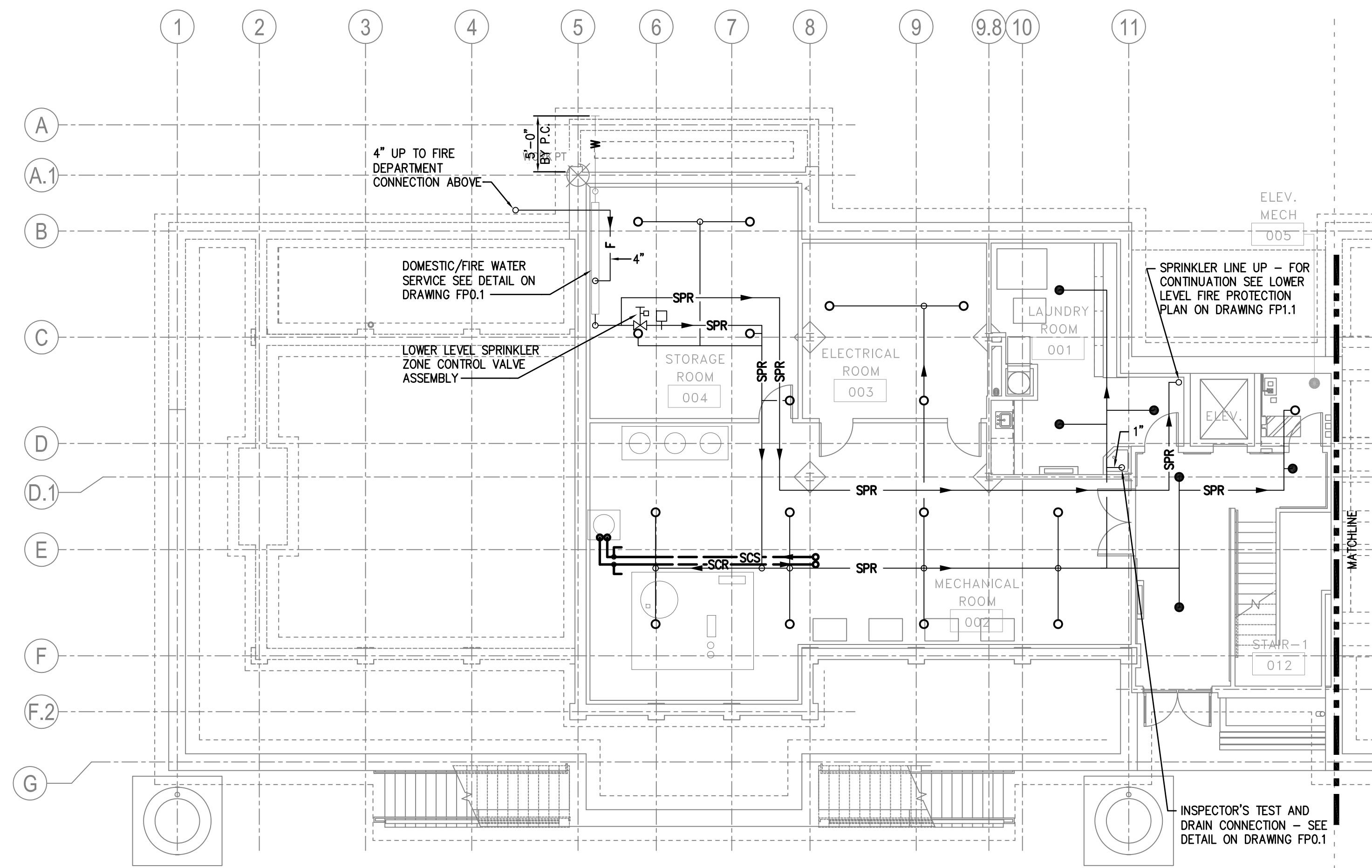
APPLICABLE CONTRACT NO'S.

GENERAL:	PLUMBING: FDC-133-4494.3
HVAC:	ELECTRICAL:
ROADWAY:	

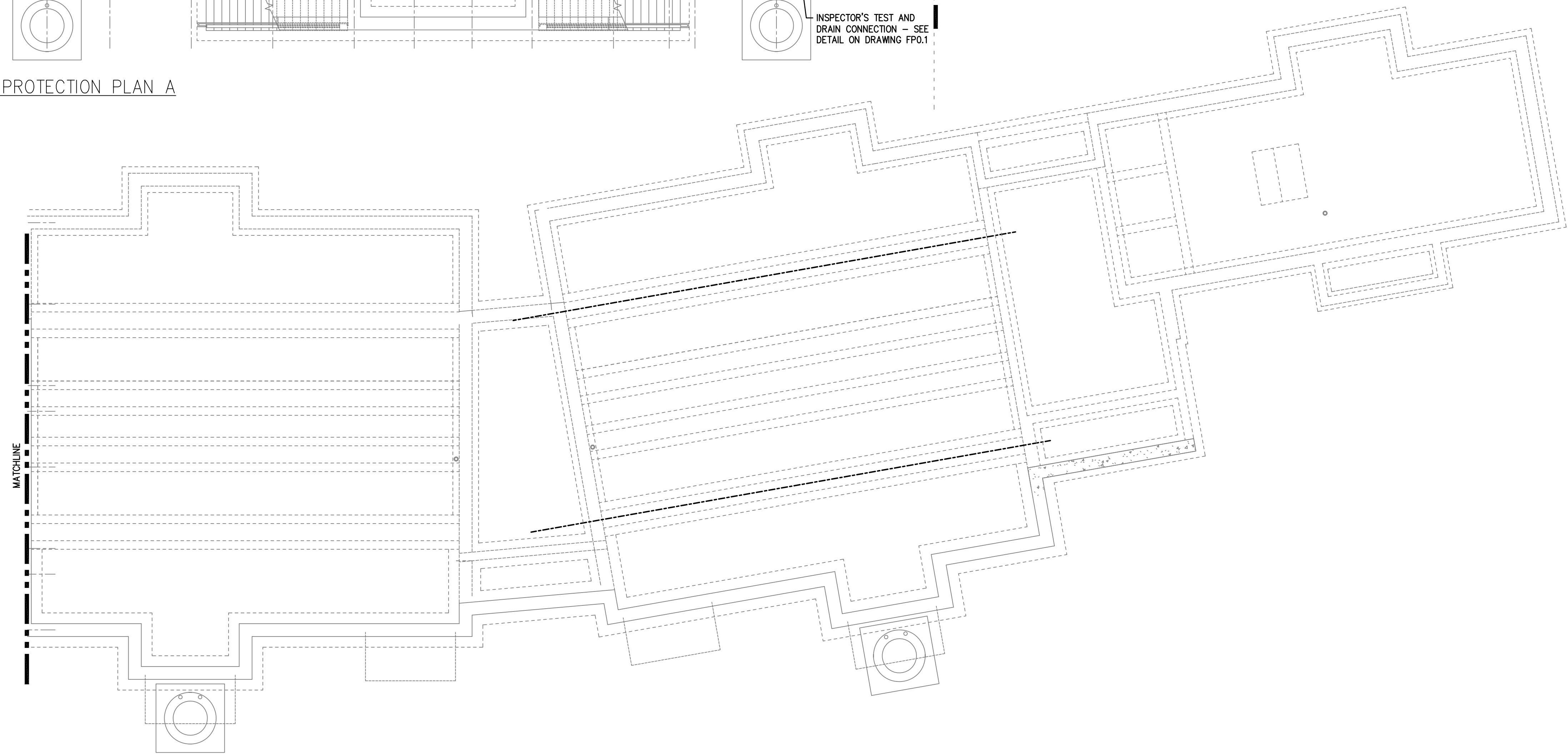
THE INN AT BALD EAGLE STATE PARK
 HOWARD AND LIBERTY TOWNSHIP,
 CENTRE COUNTY, PENNSYLVANIA

FIRE PROTECTION SYMBOLS,
 NOTES, DETAILS AND ABBREVIATIONS

DRAWN BY: JPB	DATE: 09-03-08	DRAWING NO: FP0.1
CHECKED BY: DPA	SCALE: AS NOTED	



1 BASEMENT FIRE PROTECTION PLAN A
 FP1.0 SCALE: 1/8" = 1'-0"



2 BASEMENT FIRE PROTECTION PLAN B
 FP1.0 SCALE: 1/8" = 1'-0"

THIS RECORD DRAWING HAS BEEN PREPARED ON INFORMATION PROVIDED BY OTHERS. THE DESIGN PROFESSIONAL HAS NOT VERIFIED THE ACCURACY AND/OR COMPLETENESS OF THIS INFORMATION AND SHALL NOT BE RESPONSIBLE FOR ANY ERRORS OR OMISSIONS WHICH MAY BE INCORPORATED HEREIN AS A RESULT.

LLI ENGINEERING PROJECT NUMBER
 20070085
6000 BROOKTREE ROAD, SUITE 300 WEXFORD, PA 724 934-8800

15/11/10	RECORD DRAWING		
09/28/08	ADDENDUM NO. 1		
1 09/23/08	ISSUED FOR CONSTRUCTION		
NO.	DATE	REVISION	APPR.

SUBMITTED	
PROJECT DESIGNER	PROJECT COORDINATOR
APPROVED	
CHIEF - DIVISION OF DESIGN	
APPROVED	
DIRECTOR - BUREAU OF FACILITY DESIGN AND CONSTRUCTION	

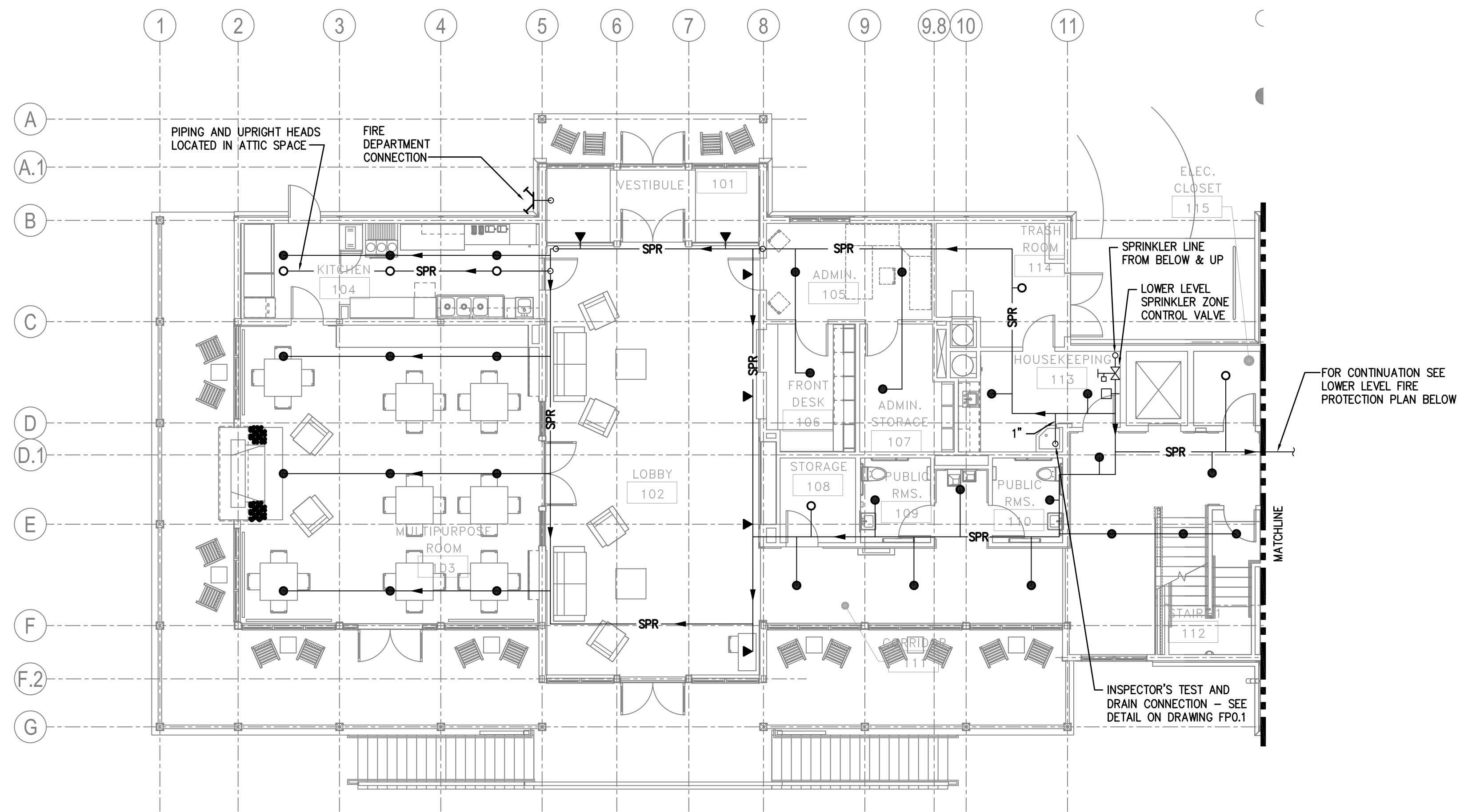
COMMONWEALTH OF PENNSYLVANIA
 DEPARTMENT OF CONSERVATION AND NATURAL RESOURCES
 OFFICE OF PARKS AND FORESTRY

PROJECT NO: FDC-133-4494
 APPLICABLE CONTRACT NO'S.
 GENERAL: PLUMBING: FDC-133-4494.3
 HVAC: ELECTRICAL:
 ROADWAY:

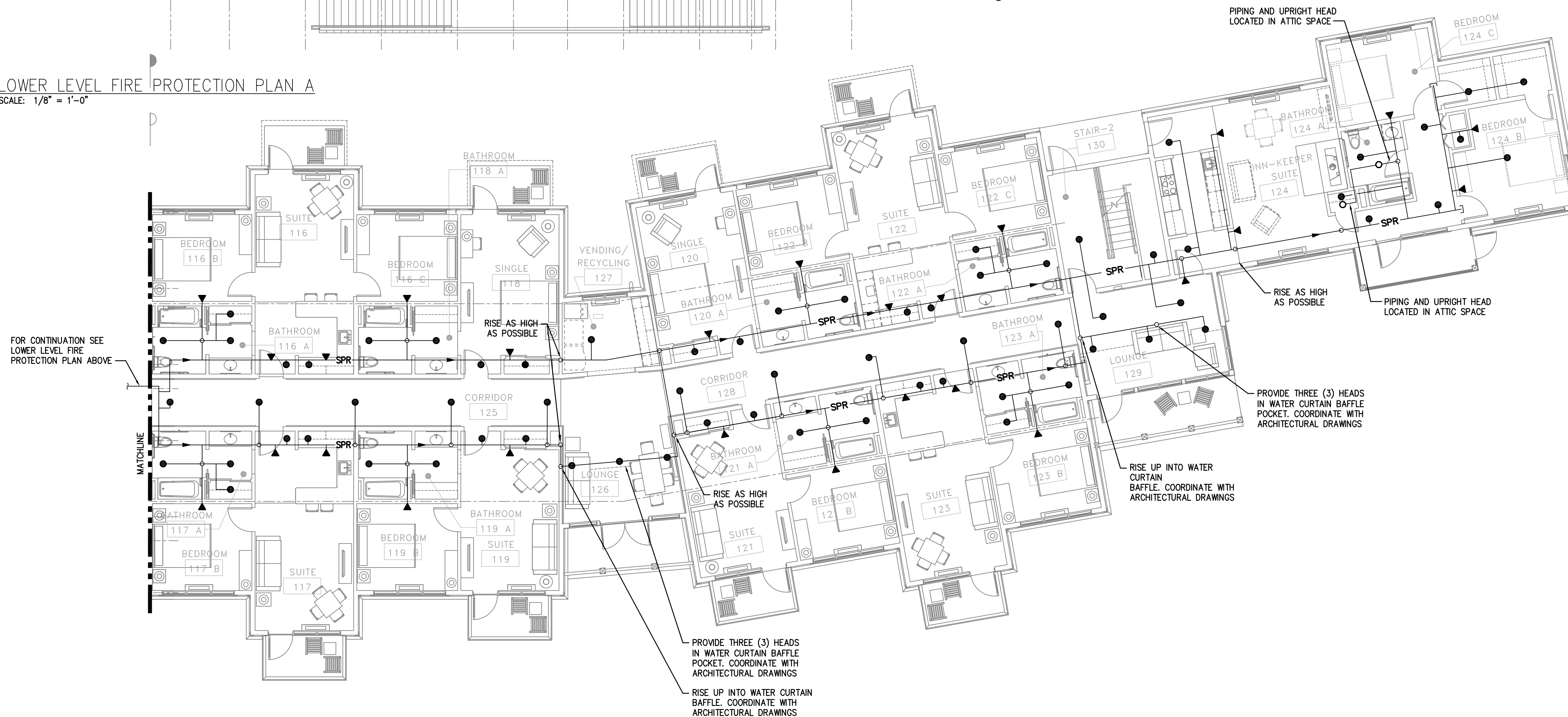
THE INN AT BALD EAGLE STATE PARK
 HOWARD AND LIBERTY TOWNSHIP,
 CENTRE COUNTY, PENNSYLVANIA

BASEMENT PLAN
 FIRE PROTECTION

DRAWN BY: JPB DATE: 09-03-08 DRAWING NO:
 CHECKED BY: DPA SCALE: AS NOTED **FP1.0**



1 LOWER LEVEL FIRE PROTECTION PLAN A
SCALE: 1/8" = 1'-0"



2 LOWER LEVEL FIRE PROTECTION PLAN B
SCALE: 1/8" = 1'-0"

THIS RECORD DRAWING HAS BEEN PREPARED ON INFORMATION PROVIDED BY OTHERS. THE DESIGN PROFESSIONAL HAS NOT VERIFIED THE ACCURACY AND/OR COMPLETENESS OF THIS INFORMATION AND SHALL NOT BE RESPONSIBLE FOR ANY ERRORS OR OMISSIONS WHICH MAY BE INCORPORATED HEREIN AS A RESULT.

LLI ENGINEERING PROJECT NUMBER
20070085
6000 BROOKTREE ROAD, SUITE 300 WEXFORD, PA 724 934-8800

NO.	DATE	REVISION	APPR.
1	09/03/08	ISSUED FOR CONSTRUCTION	

SUBMITTED	PROJECT DESIGNER	PROJECT COORDINATOR
APPROVED	CHIEF - DIVISION OF DESIGN	
APPROVED	DIRECTOR - BUREAU OF FACILITY DESIGN AND CONSTRUCTION	

COMMONWEALTH OF PENNSYLVANIA
DEPARTMENT OF CONSERVATION AND NATURAL RESOURCES
OFFICE OF PARKS AND FORESTRY

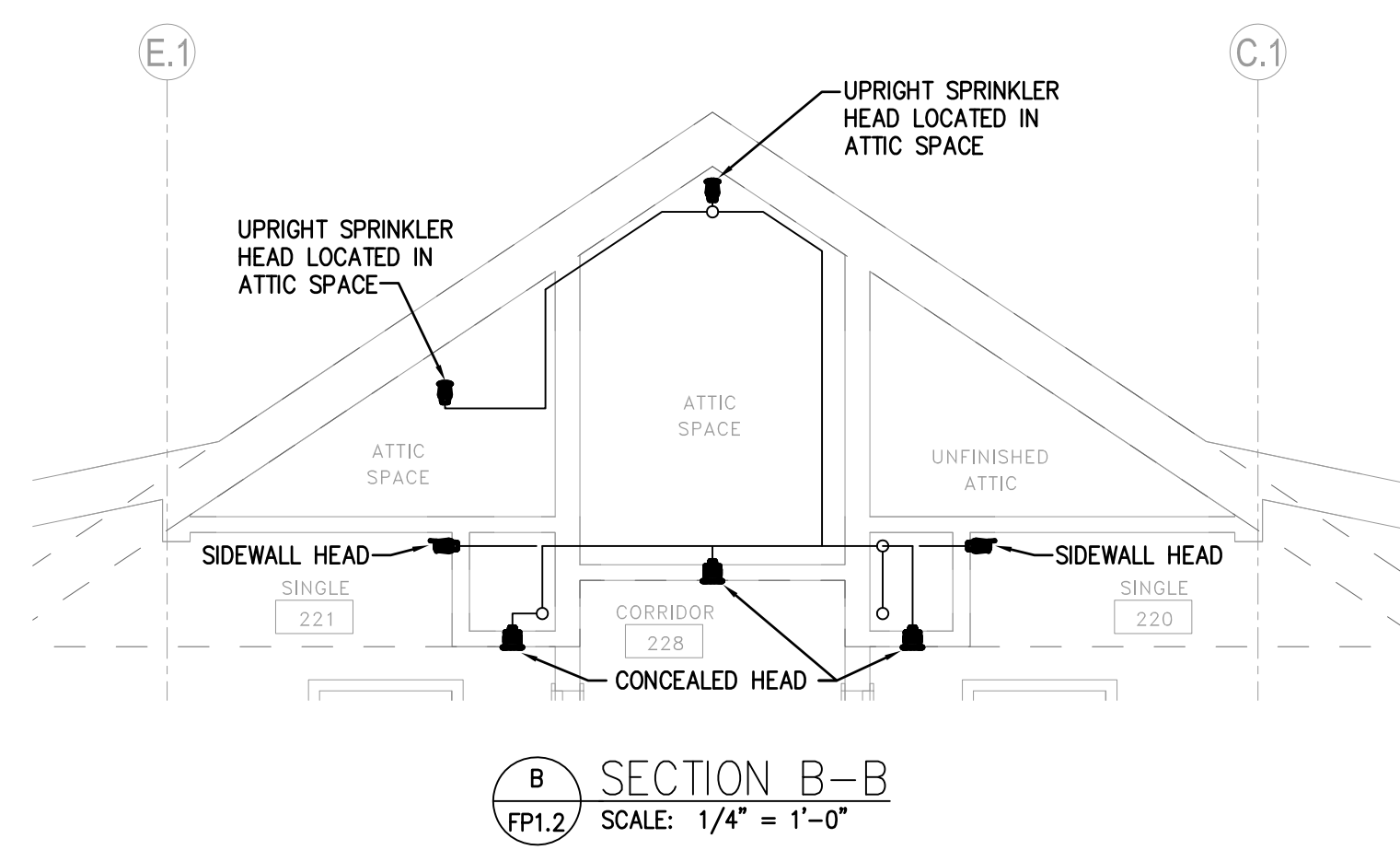
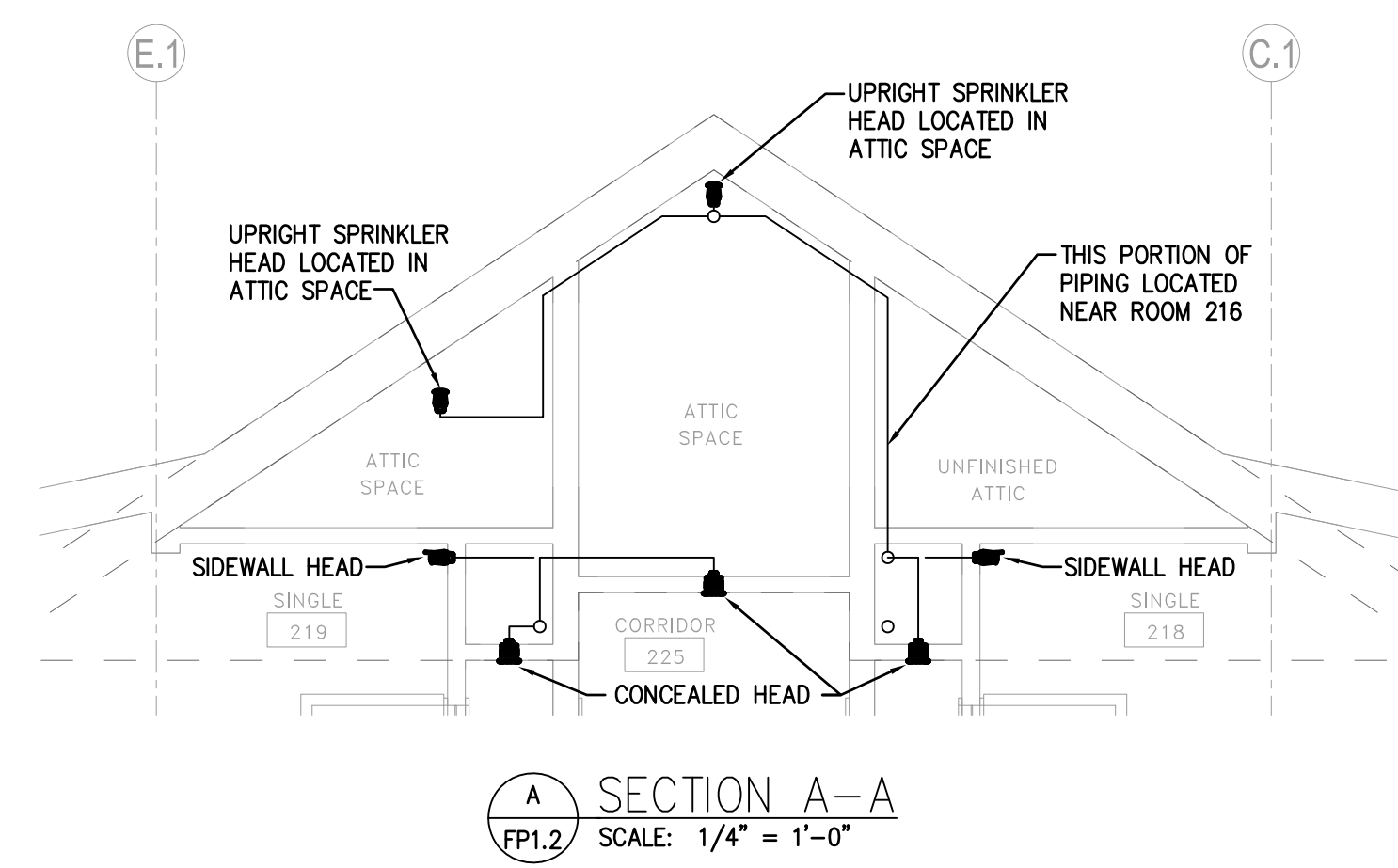
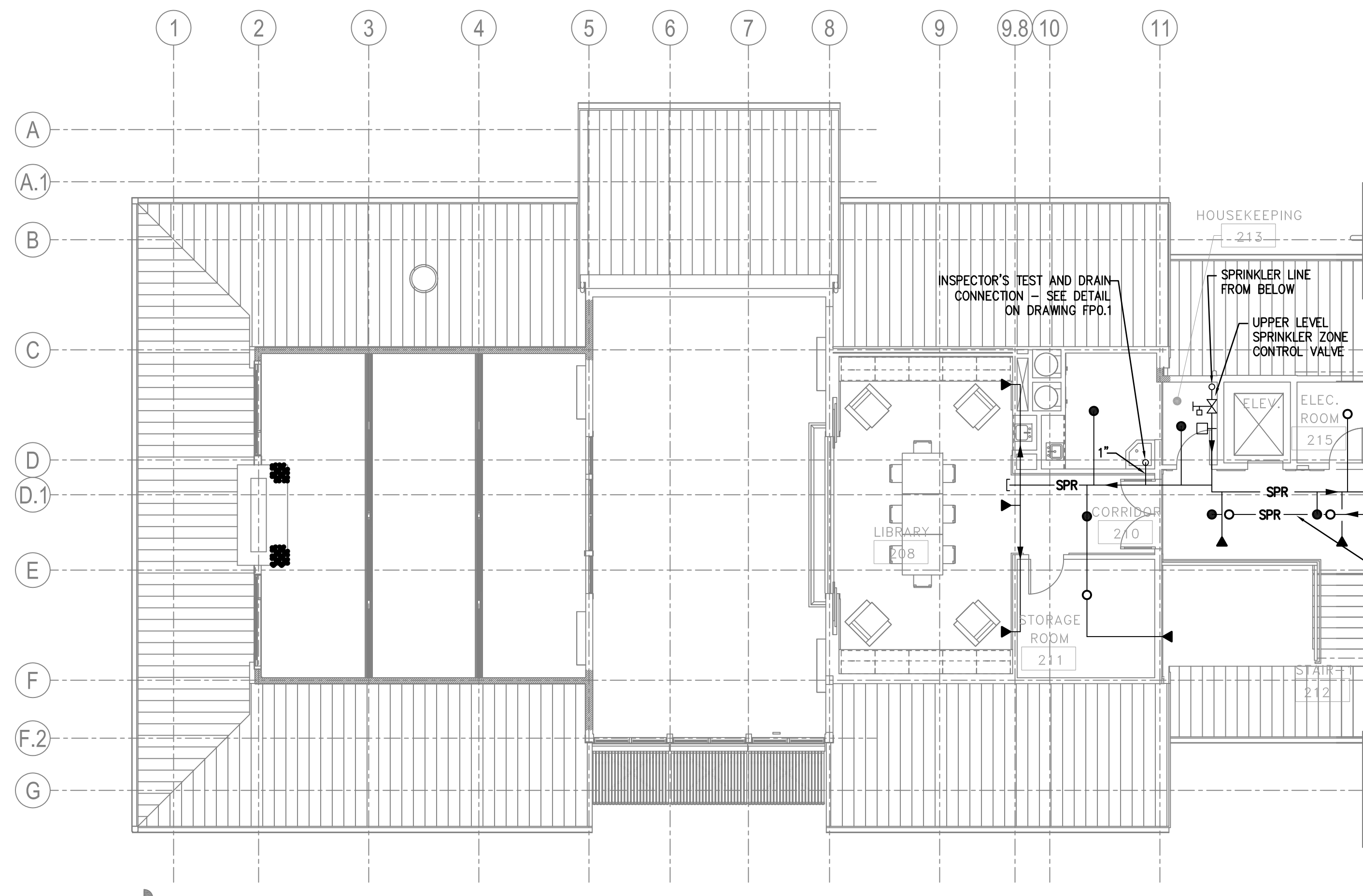
PROJECT NO: FDC-133-4494
APPLICABLE CONTRACT NO'S.

GENERAL:	PLUMBING: FDC-133-4494.3
HVAC:	ELECTRICAL:
ROADWAY:	

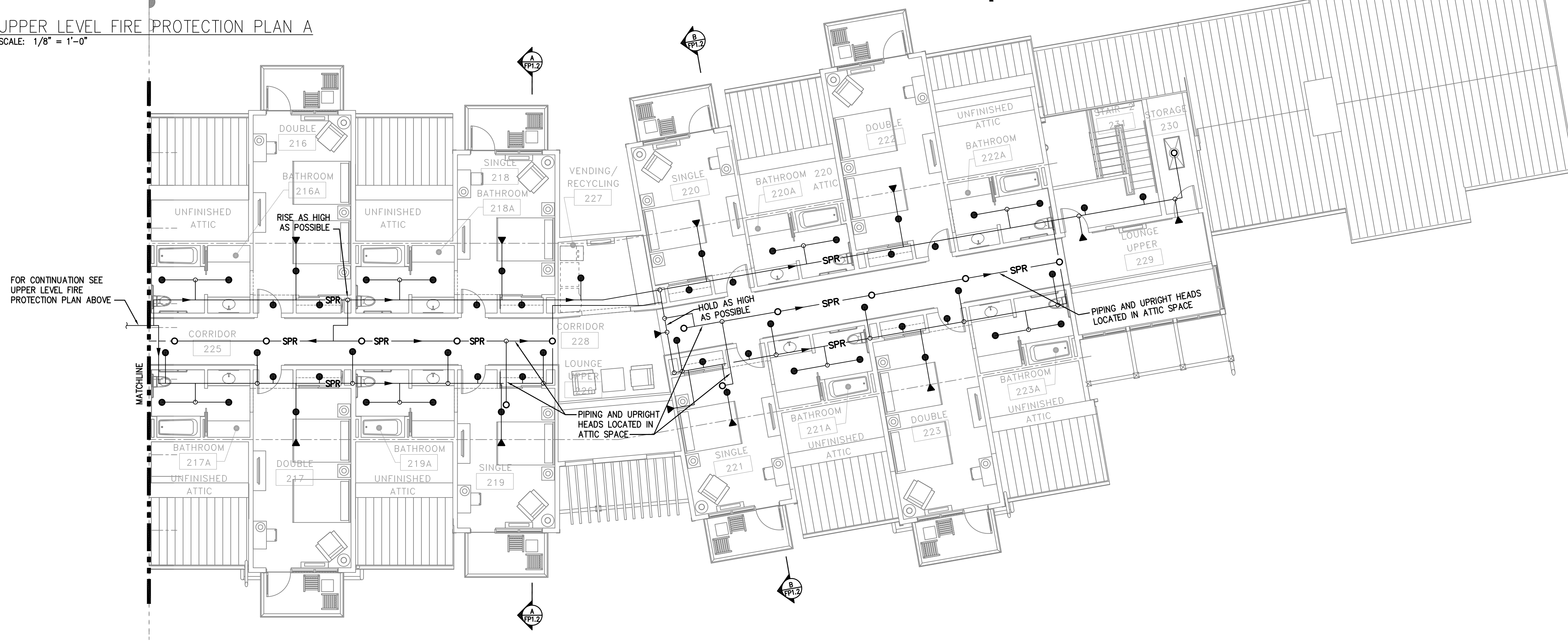
THE INN AT BALD EAGLE STATE PARK
HOWARD AND LIBERTY TOWNSHIP,
CENTRE COUNTY, PENNSYLVANIA

LOWER LEVEL FLOOR PLAN
FIRE PROTECTION

DRAWN BY:	DATE:	DRAWING NO.:
JPB	09-03-08	FP1.1
CHECKED BY:	SCALE:	
DPA	AS NOTED	



1 UPPER LEVEL FIRE PROTECTION PLAN A
SCALE: 1/8" = 1'-0"



2 UPPER LEVEL FIRE PROTECTION PLAN B
SCALE: 1/8" = 1'-0"

THIS RECORD DRAWING HAS BEEN PREPARED ON INFORMATION PROVIDED BY OTHERS. THE DESIGN PROFESSIONAL HAS NOT VERIFIED THE ACCURACY AND/OR COMPLETENESS OF THIS INFORMATION AND SHALL NOT BE RESPONSIBLE FOR ANY ERRORS OR OMISSIONS WHICH MAY BE INCORPORATED HEREIN AS A RESULT.

LLI ENGINEERING
6000 BROOKTREE ROAD, SUITE 300 WEXFORD, PA 724 934-8800
PROJECT NUMBER 20070085

106110	RECORD DRAWING		
042150	FIRE PROTECTION REVISIONS		
1	ISSUED FOR CONSTRUCTION		
NO.	DATE	REVISION	APPR.
SUBMITTED			
PROJECT DESIGNER		PROJECT COORDINATOR	
APPROVED			
CHIEF - DIVISION OF DESIGN			
APPROVED			
DIRECTOR - BUREAU OF FACILITY DESIGN AND CONSTRUCTION			

COMMONWEALTH OF PENNSYLVANIA
DEPARTMENT OF CONSERVATION AND NATURAL RESOURCES
OFFICE OF PARKS AND FORESTRY
PROJECT NO: FDC-133-4494
APPLICABLE CONTRACT NO'S.

GENERAL: PLUMBING: FDC-133-4494.3
HVAC: ELECTRICAL:
ROADWAY:

THE INN AT BALD EAGLE STATE PARK
HOWARD AND LIBERTY TOWNSHIP,
CENTRE COUNTY, PENNSYLVANIA

UPPER LEVEL FLOOR PLAN
FIRE PROTECTION
DRAWN BY: JPB DATE: 09-03-08 DRAWING NO:
CHECKED BY: DPA SCALE: AS NOTED **FP1.2**